

West Sussex - Statistical Neighbour View

Change Authority

Topic

Indicator

Children who are the subject of a Child Protection Plan - rate per 10,000

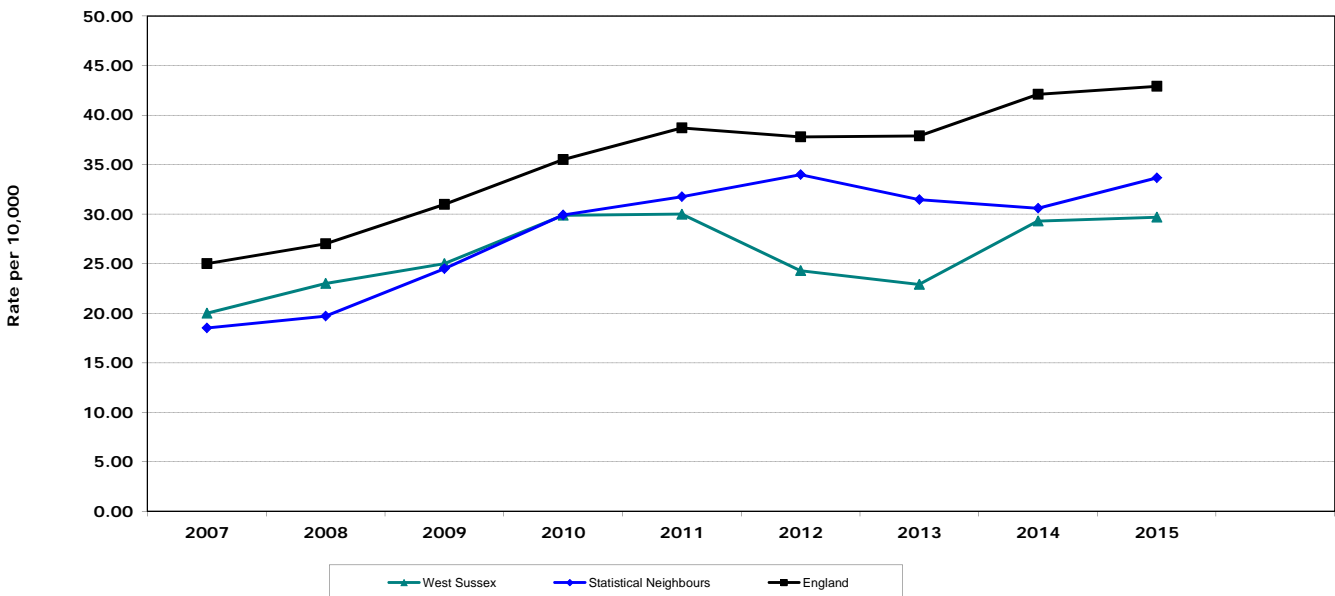
Statistical Neighbours

		2007	2008	2009	2010	2011	2012	2013	2014	2015	-	Change from previous year
881	Essex	21.00	18.00	22.00	25.60	30.20	26.20	18.40	14.10	15.40	-	1.30
802	North Somerset	20.00	23.00	28.00	22.30	29.00	28.40	23.00	26.30	28.70	-	2.40
800	Bath and North East Somerset	20.00	18.00	22.00	20.80	29.80	20.80	36.20	23.20	28.80	-	5.60
855	Leicestershire	11.00	18.00	19.00	-	30.50	39.10	29.30	32.70	29.20	-	-3.50
938	West Sussex	20.00	23.00	25.00	29.90	30.00	24.30	22.90	29.30	29.70	-	0.40
803	South Gloucestershire	14.00	15.00	25.00	26.00	32.00	39.50	33.90	20.40	30.10	-	9.70
885	Worcestershire	24.00	23.00	28.00	31.60	36.70	39.80	37.40	33.20	32.00	-	-1.20
916	Gloucestershire	17.00	17.00	21.00	-	37.50	32.70	33.80	36.50	34.70	-	-1.80
836	Poole	23.00	27.00	28.00	47.10	27.50	43.50	39.30	45.20	41.40	-	-3.80
850	Hampshire	16.00	17.00	23.00	23.20	26.60	28.40	32.40	39.40	48.10	-	8.70
835	Dorset	19.00	21.00	29.00	42.70	37.70	41.50	31.10	34.90	48.20	-	13.30
	Statistical Neighbours	18.50	19.70	24.50	29.91	31.75	33.99	31.48	30.59	33.66	-	3.07
970	England	25.00	27.00	31.00	35.50	38.70	37.80	37.90	42.10	42.90	-	0.80

	Trend	Change from previous year	National Rank	Quartile Banding
938 West Sussex	▲	0.40	-	-
989 South East	▲	2.80		
970 England	▲	0.80		

The averages presented here are simple averages for the authorities listed (excluding the LA selected). They provide a simple comparator of the performance indicators without placing too much emphasis on any one Local Authority. Where data does not exist for an LA it is excluded from the mean calculation.

Children who are the subject of a Child Protection Plan - rate per 10,000



Description:

Rate of children who were the subject of a child protection plan at 31 March per 10,000 children

Methodology:

Last Updated: October 2015

Next Updated: October 2016

Source:

<https://www.gov.uk/government/statistics/characteristics-of-children-in-need-2014-to-2015>