

West Sussex Joint Strategic Needs Assessment Briefing

INDICES OF DEPRIVATION 2019

This briefing details the information published by the Department of Communities and Local Government (DCLG). The Indices of Deprivation 2019 (ID2019) updates the 2015 indices.

The ID2019 measures relative deprivation, i.e. how deprived one area is compared with another; it doesn't measure absolute deprivation, i.e. how deprived an area is compared with how deprived it was a year ago.

The overarching methodology for the IMD remains, with the seven domains of deprivation unchanged: - income, employment, education, health, crime, barriers to housing and services, and living environment.

While the methodology for most of the domains has remained the same, some minor changes have been made to the Income domain due to the move towards Universal Credit.

For each domain there is an individual score and ranking, information from the domains are weighted and combined to provide an overall score and ranking.

Further information on the indicators and the methodology is available on the DCLG website.

An easy-to-read guide issued by the DCLG is attached.

Note: For this briefing the following sources of information have been used:-

- <https://www.gov.uk/government/statistics/english-indices-of-deprivation-2019>
- <https://geoportal.statistics.gov.uk> used to find look-up files to link up different geographical breakdowns.

SUMMARY POINTS

- West Sussex ranked 129th of 151 upper tier authorities (1 being most deprived, 151 being least deprived). The county remains one of the least deprived areas in the country. Blackpool remains the most deprived local authority.
- In relation to neighbouring authorities, West Sussex is relatively less deprived than East Sussex (ranked 93rd) and Brighton and Hove (ranked 87th); more deprived than Hampshire (ranked 136th) and Surrey (ranked 145th).

Table 1 Overall Deprivation Ranking Upper Tier Authorities 2010, 2015, and 2019

	Rank 2010	Rank 2015	Rank 2019
West Sussex	130	131	129
Brighton and Hove	53	74	89
East Sussex	90	99	91
Hampshire	141	141	135
Surrey	150	150	145

- Of the West Sussex Districts and Boroughs, Crawley now ranks as the most deprived (overall) in West Sussex, followed by Arun, Adur and Worthing. Mid Sussex remains the least deprived area in West Sussex.

Table 2 Overall Deprivation Ranking Lower Tier Authorities 2010,2015, and 2019

	Rank 2010	Rank 2015	Rank 2019
Adur	145	159	164
Arun	154	173	149
Chichester	222	242	213
Crawley	170	171	136
Horsham	304	299	290
Mid Sussex	315	321	311
Worthing	160	174	174

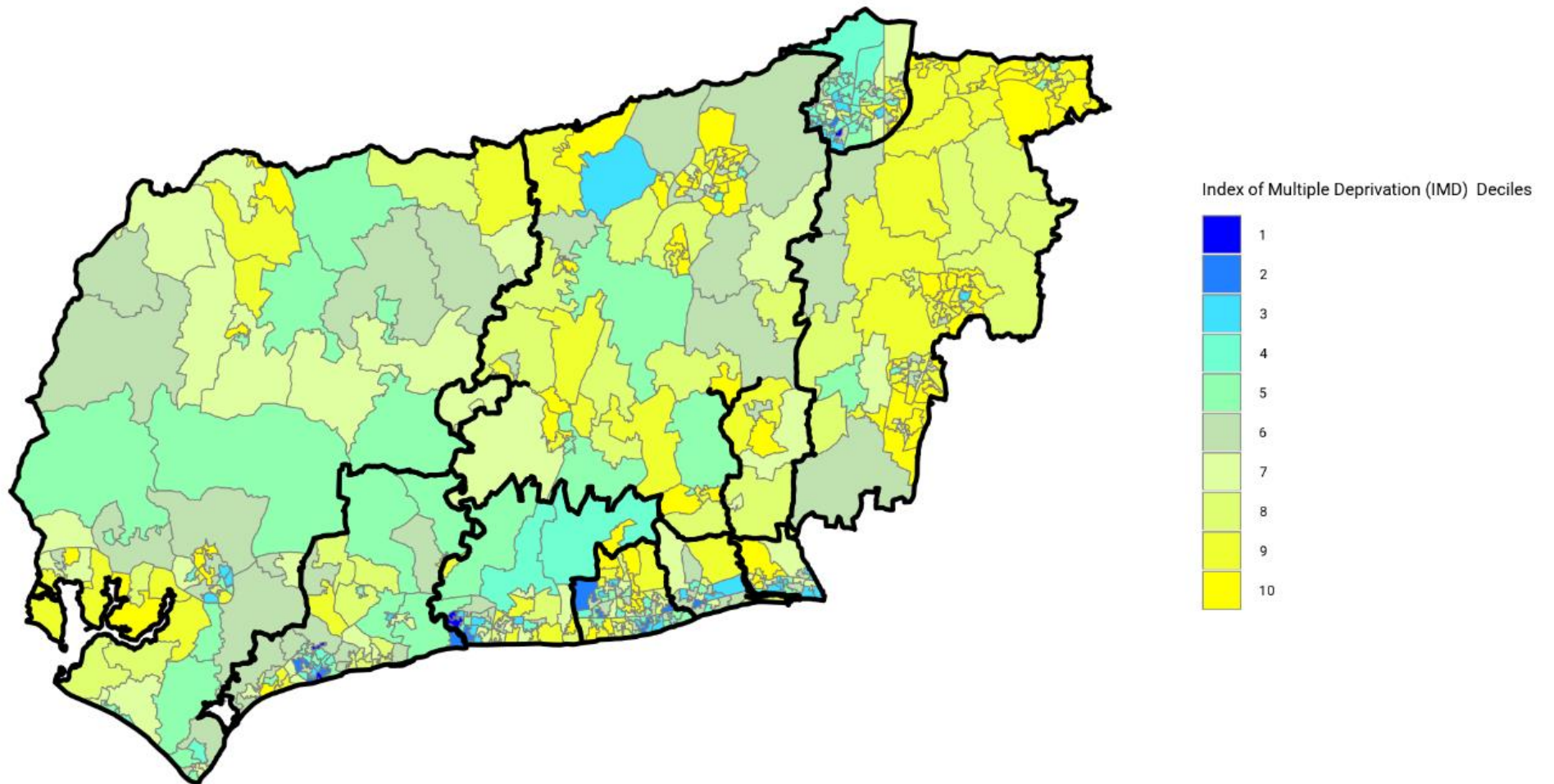
Ranking of 317 lower tier authorities (1 being most deprived, 317 least)¹

- Ranking values for Clinical Commissioning Group areas were also published. Of the 191 CCGs Coastal West Sussex CCG ranked 139th, Crawley CCG 95th and Horsham and Mid Sussex CCG ranked 189th.
- In relation to “neighbourhood level” deprivation, areas within three wards in Arun and one ward in Crawley fall within the 10% most deprived areas in England. These wards are Courtwick with Toddington, Marine, and Bersted in Arun and Broadfield South In Crawley.

¹ In 2010 and 2015 there were 326 LAs, this reduction could possibly explain small reductions in some ranks (reductions <9)

National Index of Multiple Deprivation (IMD) Deciles (2019) in West Sussex

Notes. Deciles: 1 = most deprived (blue), 10 = least deprived (yellow)



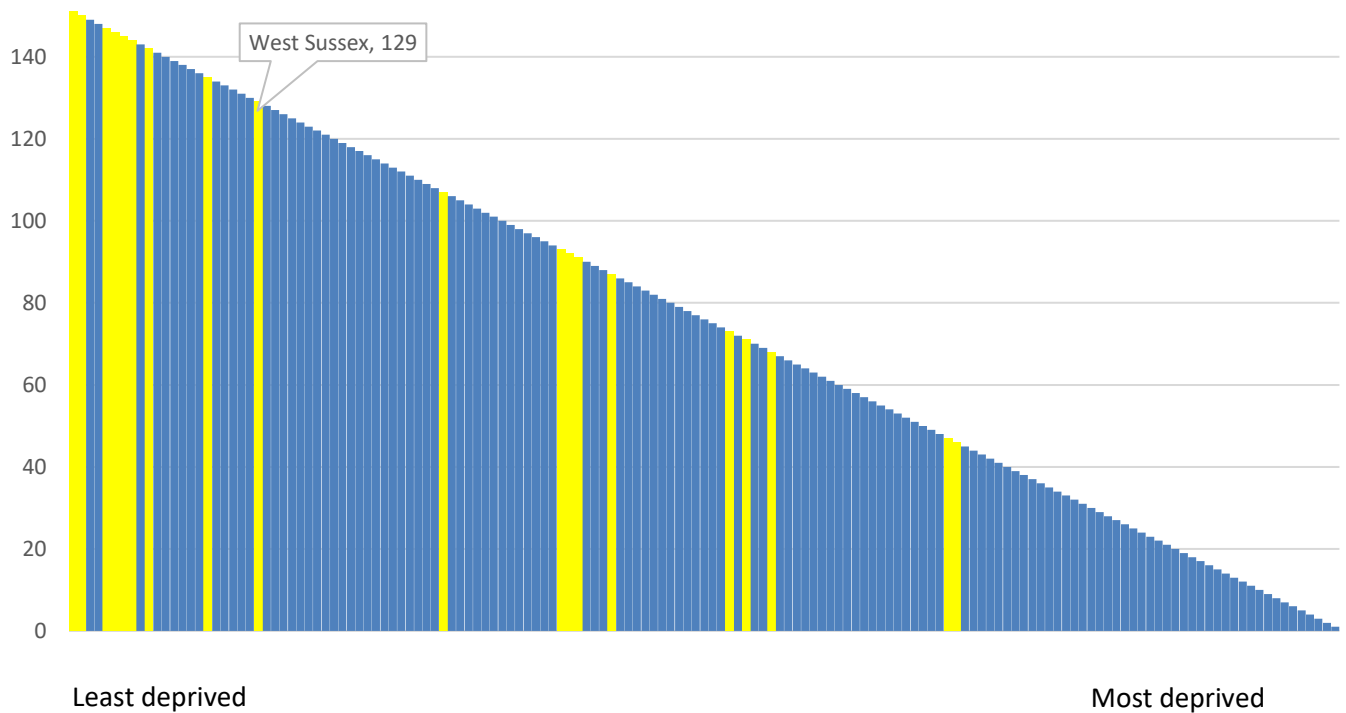
ONS - OpenGeography

MHCLG - Index of Multiple Deprivation 2019

County Level

In 2019, West Sussex was ranked as the 129th least deprived upper tier local authority (out of 151) in England, this puts it in the least deprived 20% of the country overall. The relative position of the county has remained stable.

Figure 1 Upper-tier local authorities ordered by ID2019 Rank (1 being most deprived) (South East local authorities are shaded yellow)



In relation to the seven domains of deprivation, the lowest ranks (higher deprivation) related to indicators of barriers to housing and services, education, and living environment.

Table 3 West Sussex domain ranks, 2015 and 2019

Domain	Rank 2015	Rank 2019
Income	128	128
Employment	128	125
Education	94	95
Health	126	118
Crime	117	128
Barriers to housing and services	73	61
Living Environment	117	97

Source: MHCLG

While the individual domain ranks have remained relatively stable, as indicated by the small change in overall IMD rank change between 2015 and 2019, the Living Environment domain has fallen by 20 places, just over 1 decile. This domain looks at both indoor (housing) and outdoor (road safety and air pollution) living environments.

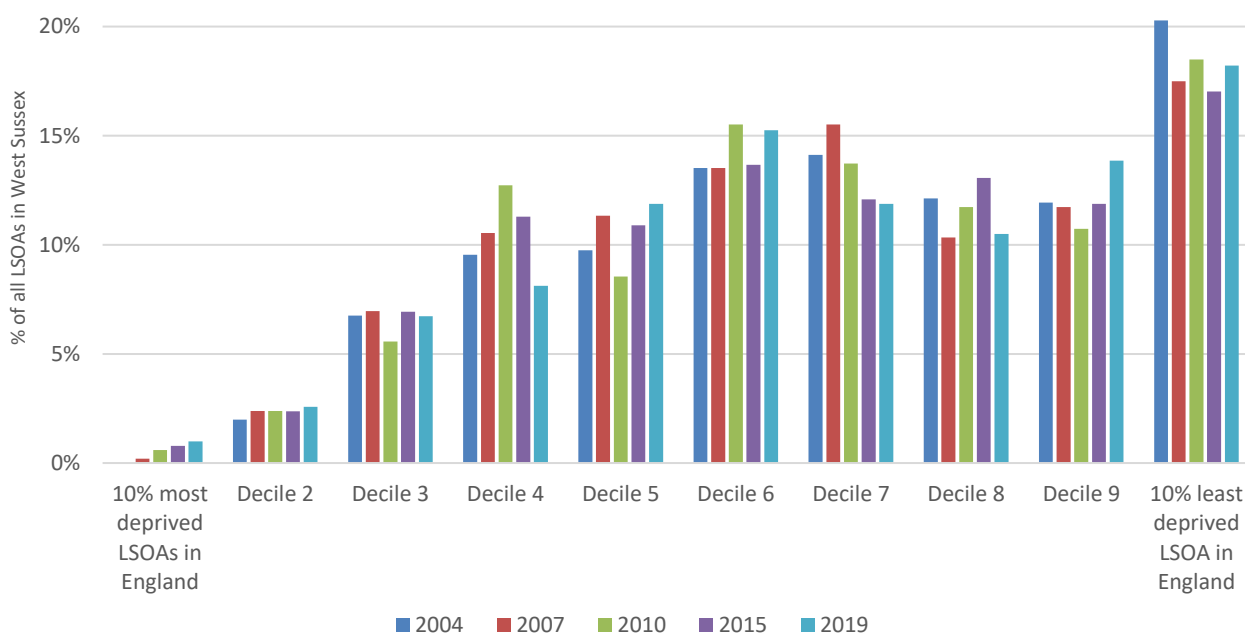
Deprivation Profile of West Sussex LSOAs

The 2019 indices were the fifth in the series to release data at LSOA level. There have been some changes to LSOA boundaries, nationally and within West Sussex², so comparison over time can be difficult. It is possible to look at the spread of small areas according to their national decile grouping (Figure 2).

In 2019, five LSOAs within West Sussex were in the least deprived 10% of LSOAs in England, four in Arun and one in Crawley. The proportion of LSOAs in the 20% most deprived has steadily increased each release since 2004. The proportion of LSOAs in the 20% least deprived deciles is also at its highest level since 2004.

The percentage of LSOAs in the least deprived 50% (decile groups 6 to 10) has stayed relatively stable, moving from 69.8% in 2010 to 70.3% in 2015 back to 69.8% in 2019.

Figure 2: West Sussex LSOAs by Deprivation Decile 2004, 2007, 2010, 2015, and 2019



Source: WSCC PHRU analysis of MHCLG data

² In West Sussex there are now (2019 and 2015) 505 LSOAs compared with 503 LSOAs in 2010.

Figure 3: Histogram of number of LSOA, by deprivation rank, by district*





*Purple (bottom) line represents deprivation decile 1, blue line represents decile 2



Source: MHCLG

Figure 3 demonstrates the relative spread of deprivation across each of the districts. Large peaks in Horsham and Mid Sussex around the 30,000 rank show a clustering of LSOAs within the least deprived deciles with little variation across the districts, while in Worthing the spread is more even showing that although a small district, there are LSOAs spread across 9 of the deprivation deciles. The skewed nature of Crawley also suggests that while the majority of the population live in LSOAs within deprivation deciles 3 and 4, there are communities living in the least deprived national deciles.

20 Most Deprived LSOAs in West Sussex

Boxes are shaded according to their national ranking

 = 10% most deprived nationally
 = 20% most deprived nationally

 = 10% least deprived nationally
 = 20% least deprived nationally

Local Authority	Ward	LSOA Code	Overall Deprivation	Income	Employment	Education, Skills & Training	Health	Crime	Barriers to Housing and Services	Living Environ	IDACI	IDAOP1
Arun	Courtwick with Toddington	E01031429	1,861	1,854	2,041	390	2,866	10,564	7,101	25,800	1,871	6,686
Arun	Courtwick with Toddington	E01031427	2,720	3,307	3,252	2,293	2,293	4,617	10,543	12,558	3,157	4,538
Arun	Marine	E01031436	2,809	5,101	3,363	2,115	2,416	2,927	10,206	8,682	9,773	3,616
Crawley	Broadfield South	E01031558	3,234	2,814	5,076	845	7,091	3,629	8,210	24,493	3,213	1,447
Arun	Bersted	E01031404	3,247	3,905	5,655	691	1,866	13,066	7,800	20,955	3,353	3,343
Worthing	Central	E01031790	3,779	5,450	2,625	8,133	5,547	2,628	21,673	2,852	4,479	7,058
Worthing	Heene	E01031808	3,975	7,338	4,663	11,253	2,096	8,298	13,260	460	4,871	12,180
Worthing	Northbrook	E01031819	4,070	4,691	4,103	1,635	8,679	11,785	7,502	8,627	3,361	9,555
Arun	River	E01031454	4,204	5,749	5,227	7,944	5,256	2,315	6,948	4,665	4,284	8,881
Arun	River	E01031456	4,371	6,180	3,241	10,294	4,719	10,423	8,340	2,339	10,005	7,914
Worthing	Broadwater	E01031779	4,398	3,893	3,174	1,360	5,557	25,487	20,874	15,333	3,790	8,698
Adur	Churchill	E01031341	4,639	4,645	5,077	1,727	5,627	11,841	17,302	10,058	2,095	7,138
Worthing	Castle	E01031783	5,291	5,609	4,142	4,939	3,278	11,624	17,728	14,691	8,911	3,940
Arun	Pevensey	E01031450	5,889	9,060	7,292	932	5,689	9,302	10,075	23,928	12,513	4,693
Arun	Pevensey	E01031451	5,922	5,662	6,636	2,775	3,822	18,086	10,365	22,642	8,988	3,858
Arun	Hotham	E01031432	6,306	11,037	8,415	2,486	7,070	3,788	7,291	13,818	13,696	12,375
Crawley	Broadfield North	E01031555	6,485	6,496	11,031	2,846	10,998	14,908	2,750	9,365	4,999	8,351
Arun	Marine	E01031437	6,531	10,486	9,624	7,242	4,104	4,841	11,688	3,572	15,465	9,611
Adur	Peveler	E01031361	6,612	7,646	5,489	2,836	6,982	20,409	17,928	8,813	7,544	9,192
Adur	Eastbrook	E01031348	7,148	6,080	5,988	6,858	7,602	12,067	14,674	12,863	5,994	9,345

20 Least Deprived LSOAs in West Sussex

Boxes are shaded according to their national ranking



Local Authority	Ward	LSOA Code	Overall Deprivation	Income	Employment	Education, Skills & Training	Health	Crime	Barriers to Housing and Services	Living Environ	IDACI	IDAOP1
Mid Sussex	Lindfield	E01031773	32,842	31,851	32,503	32,191	32,563	30,874	29,472	29,859	32,019	31,079
Horsham	Holbrook East	E01031646	32,827	32,565	32,285	30,953	31,946	31,957	25,517	30,795	32,648	32,385
Horsham	Holbrook West	E01031649	32,816	32,447	31,754	28,838	31,574	32,223	31,277	27,734	31,387	31,316
Horsham	Holbrook East	E01031644	32,766	30,940	32,080	26,774	31,799	31,009	29,034	31,474	28,101	32,036
Horsham	Roffey North	E01031666	32,763	32,566	31,576	30,328	32,267	29,362	23,196	31,013	32,631	32,098
Mid Sussex	Crawley Down and Turners Hill	E01031724	32,759	32,153	32,259	26,453	32,513	32,245	25,499	30,003	26,834	32,562
Mid Sussex	Lindfield	E01031775	32,700	32,342	31,739	30,806	32,556	32,349	19,121	29,387	32,786	30,473
Chichester	Chichester North	E01031485	32,698	30,713	31,115	32,370	29,548	29,641	26,897	29,026	28,203	32,612
Mid Sussex	East Grinstead Imberhorne	E01031738	32,694	28,967	31,977	27,676	31,590	31,226	29,432	30,685	24,582	31,395
Mid Sussex	Burgess Hill Franklands	E01031703	32,687	30,744	29,900	30,660	31,761	30,677	24,511	32,288	31,819	29,994
Horsham	Trafalgar	E01031689	32,686	31,630	31,413	31,221	30,145	30,116	27,517	25,487	31,712	30,699
Mid Sussex	Haywards Heath Franklands	E01031758	32,663	30,425	27,609	28,259	31,875	32,605	31,150	31,833	29,483	32,661
Mid Sussex	East Grinstead Herontye	E01031735	32,566	30,335	31,988	27,162	32,232	30,891	21,173	31,560	28,686	30,168
Horsham	Holbrook East	E01031645	32,536	31,633	30,296	31,030	28,980	29,538	23,684	28,159	29,906	30,687
Mid Sussex	Hurstpierpoint and Downs	E01031768	32,493	31,586	30,399	32,264	32,331	29,041	18,948	27,393	32,720	29,689
Mid Sussex	Hassocks	E01031747	32,475	30,116	29,335	30,145	31,447	26,055	26,827	29,541	27,151	29,794
Chichester	Fernhurst	E01031502	32,467	31,977	32,152	32,005	30,751	32,571	16,795	24,588	32,165	29,130
Mid Sussex	Lindfield	E01031774	32,437	32,465	28,715	30,433	32,416	29,939	17,919	31,082	31,187	32,817
Horsham	Forest	E01031640	32,363	32,687	32,541	31,985	32,296	26,708	12,572	31,398	31,597	32,787
Mid Sussex	Burgess Hill Dunstall	E01031699	32,302	31,267	32,253	28,242	32,070	30,937	15,368	28,930	30,654	26,462

Abbreviations and Glossary of Terms

DCLG	Department for Communities and Local Government	The Government department is responsible for commissioning and publishing the index.
Decile / Decile Grouping	To compare the relative deprivation of one area to another, all areas are ranked from the most deprived area (ranked 1) to the least deprived. For the analysis in this report rankings have been divided into ten groups – from the most 10% deprived (the lowest decile group) to the highest decile group, the least deprived 10%. <i>National</i> rankings have been used – so an area in lowest decile group is within the most deprived area <i>nationally</i> .	
Domain - and sub domain	The Indices examine different aspects, or <i>domains</i> , of deprivation, from low income, lack of employment, education, health etc. There are seven main domains, some are further sub-divided (sub-domains) - for example income poverty is also detailed separately for children and older people.	
HMRC	Her Majesty's Revenue and Customs	
ID2019 ID2015 ID2010 ID2007 ID2004	Indices of Deprivation 2019 / 2015 / 2010 / 2007 / 2004	Other common names used are the Index of Deprivation, Index of Multiple Deprivation. This report compares information from ID2019 with the previous indices of 2004, 2007, 2010 and 2015.
IDAC	Income Deprivation Affecting Children	
IDAOP	Income Deprivation Affecting Older People	
LA	Local Authority. In this document it includes West Sussex County Council and the Districts and Boroughs (Adur District Council, Arun District Council, Chichester District Council, Crawley Borough Council, Horsham District Council, Mid Sussex District Council and Worthing Borough Council)	
LSOA	Lower Super Output Area	Super Output Areas are a geography developed by the ONS for the collection and publication of small area statistics; SOA layers form a hierarchy based on aggregations of Output Areas (OAs). Output Areas – min 40 households / 100 residents Lower Super Output Areas – average pop 1,500 Middle Super Output Areas – average pop 7,200 The ID2019 is published at LSOA level, England is split into 32,844 LSOAs, West Sussex has 505.