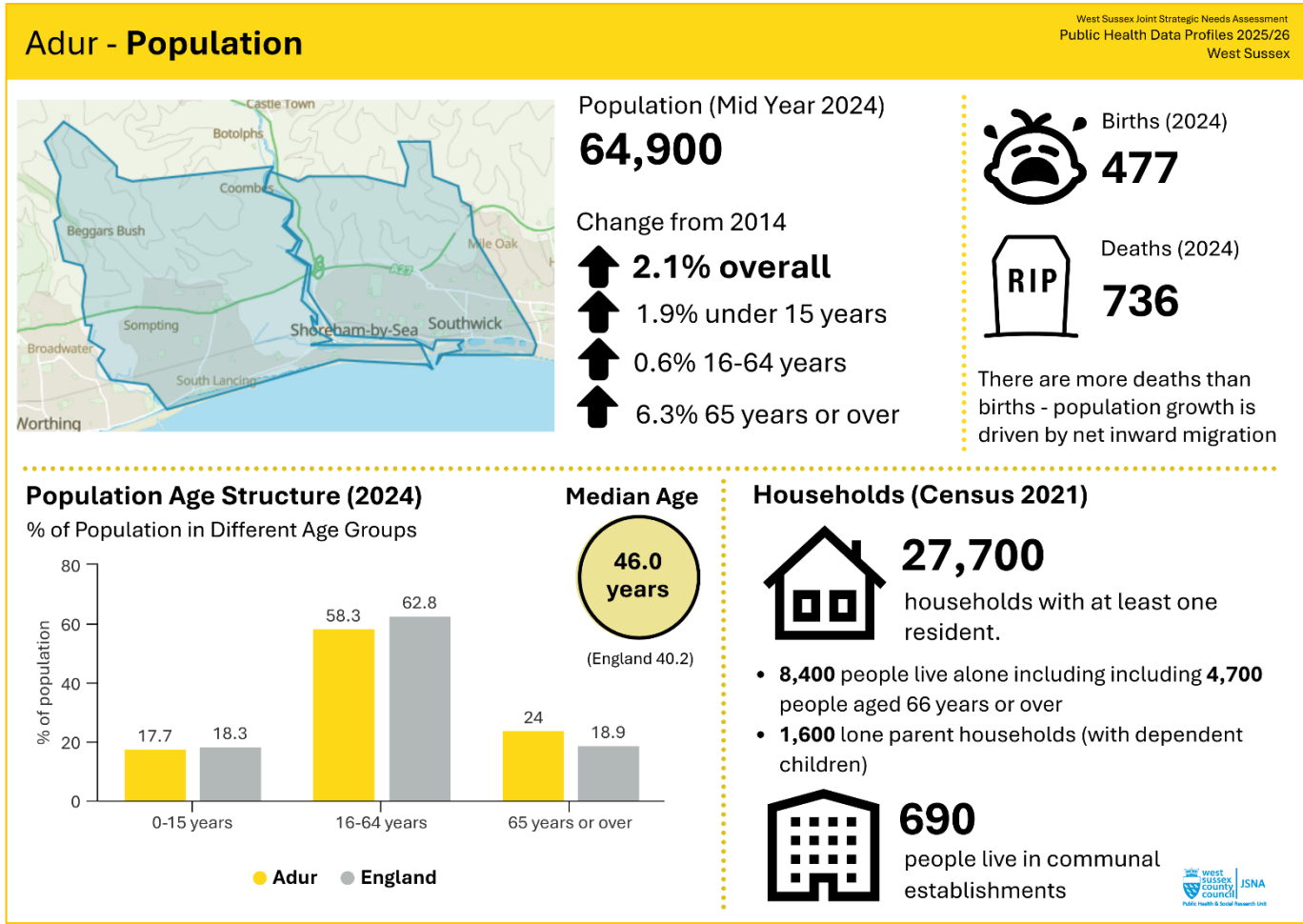


## **Appendix 3 Locality Profiles**

# ADUR

## Demographics

Adur is the smallest locality in terms of population.

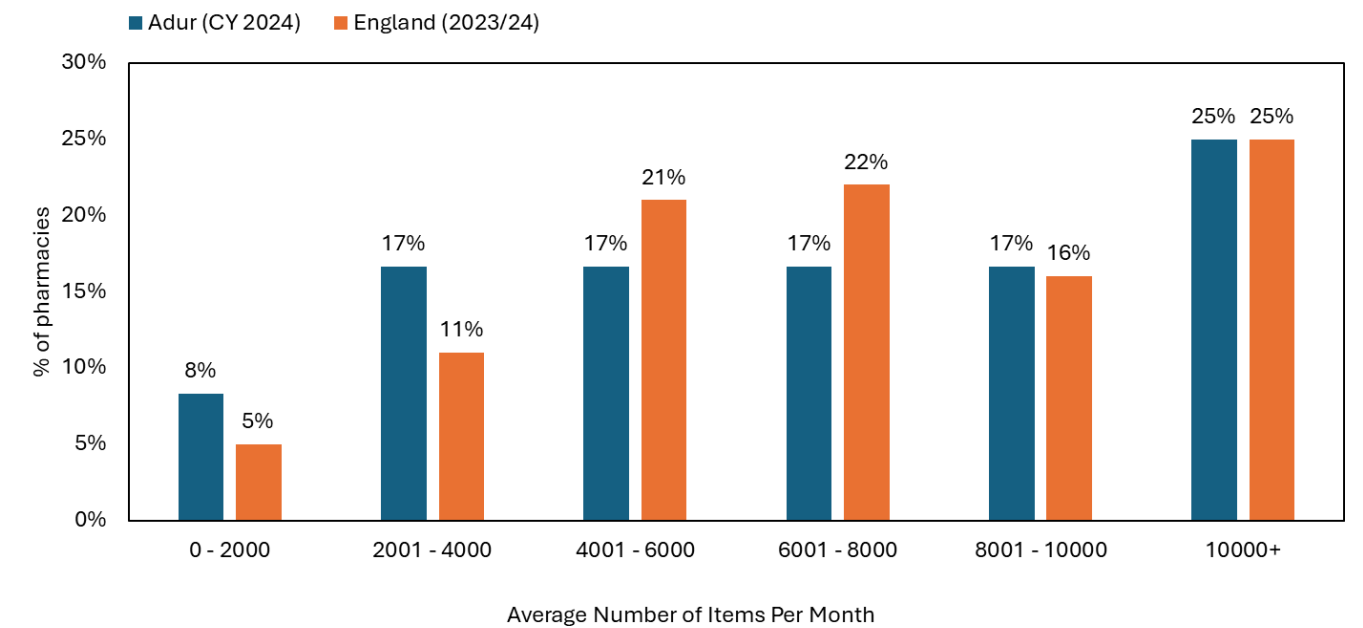


## Number of Contractors

Locality	Community Pharmacies (2022 number in brackets)	Dispensing GPs	Distance Selling	Appliance Contractor
Adur	12 (13)	0	0	1

Locality	Code	Contractor Name	Postcode	Type
Adur	FQT79	SALTS MEDILINK	BN42 4FQ	Appliance Contractor
Adur	FEF75	BOOTS	BN43 5DA	Community Pharmacy
Adur	FER67	WILMSHURST CHEMIST	BN15 9PJ	Community Pharmacy
Adur	FFF02	BOOTS	BN15 9AH	Community Pharmacy
Adur	FFJ95	PARK PHARMACY	BN43 6BT	Community Pharmacy
Adur	FFL51	COKEHAM PHARMACY	BN15 0AN	Community Pharmacy
Adur	FG616	GREENS PHARMACY	BN43 5ZA	Community Pharmacy
Adur	FJ330	GILL PHARMACY	BN15 8AN	Community Pharmacy
Adur	FJC47	ROWLANDS PHARMACY	BN15 9AH	Community Pharmacy
Adur	FK630	KAMSONS PHARMACY	BN42 4FB	Community Pharmacy
Adur	FKN87	HARRISON PHARMACY	BN42 4QB	Community Pharmacy
Adur	FRJ19	BAKHAI PHARMACY	BN43 5ZE	Community Pharmacy
Adur	FTE40	TESCO INSTORE PHARMACY	BN43 6TD	Community Pharmacy

Size of Contractors



Opening Hours

Locality	All Community Pharmacies	100- hour Community Pharmacies	Open early (before 9:00am)	Open in the evenings (after 6pm)	Open at night (after 8pm)
Adur	12	0	4	5	0

Volume of Activity on Pharmacy First – Compared with West Sussex Overall

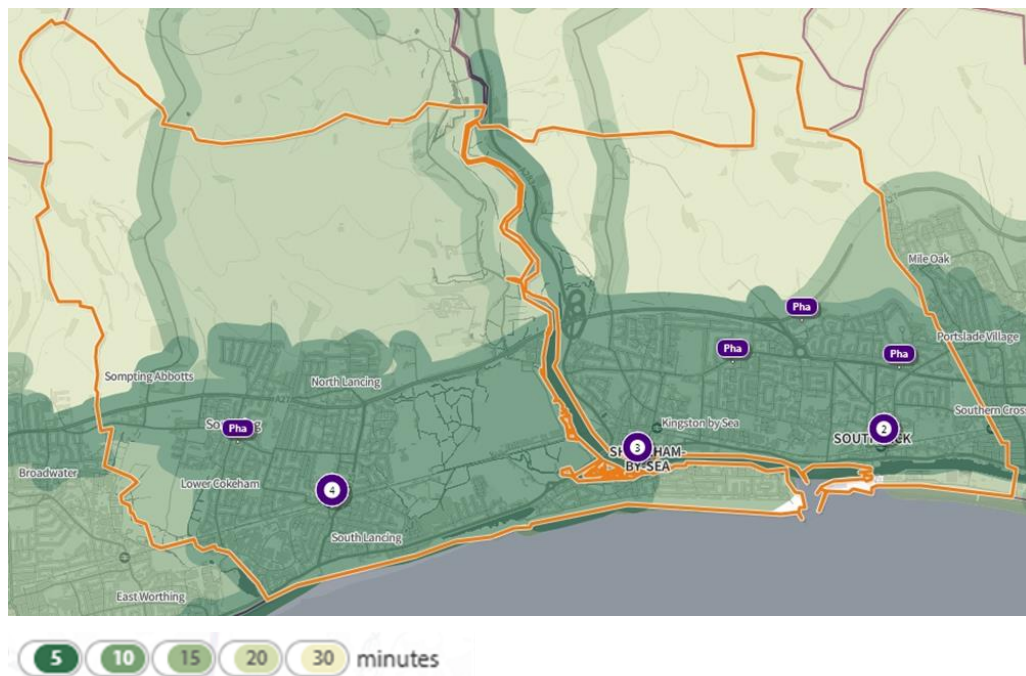
Pharmacy First Clinical Pathways Consultations (2024) and Rate per 1,000 Population

Locality	Sinusitis	Acute Sore Throat	Acute Otitis Media	Infected Insect Bites	Impetigo	Shingles	Uncomp UTI
Adur	306	602	305	322	120	85	609
West Sussex	3,144	7,465	3,833	3,470	1,319	973	7,049
Rate per 1,000 Population							
Adur	4.7	9.3	4.7	5.0	1.8	1.3	9.4
West Sussex	3.4	8.2	4.2	3.8	1.4	1.1	7.7

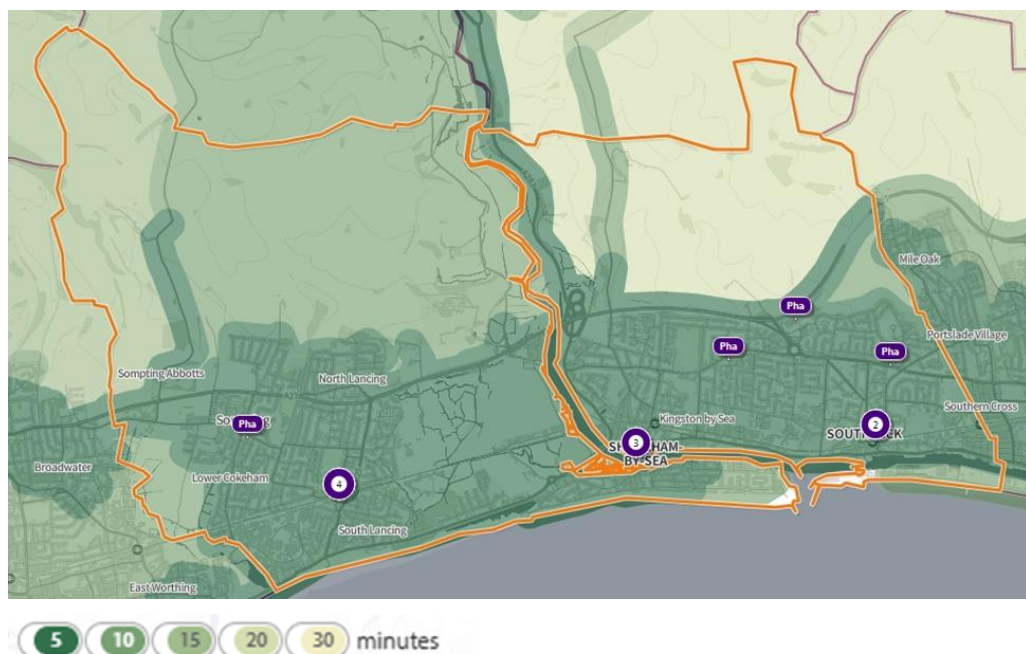
## Access Maps - Travel Time

There are two maps for each locality showing access in rush hour and outside of rush hour within the specific locality. The maps have been produced using the Department of Health and Social Care (DHSC) mapping tool (called Shape).

### Adur – Access During Rush Hour



### Adur – Access Outside of Rush Hour



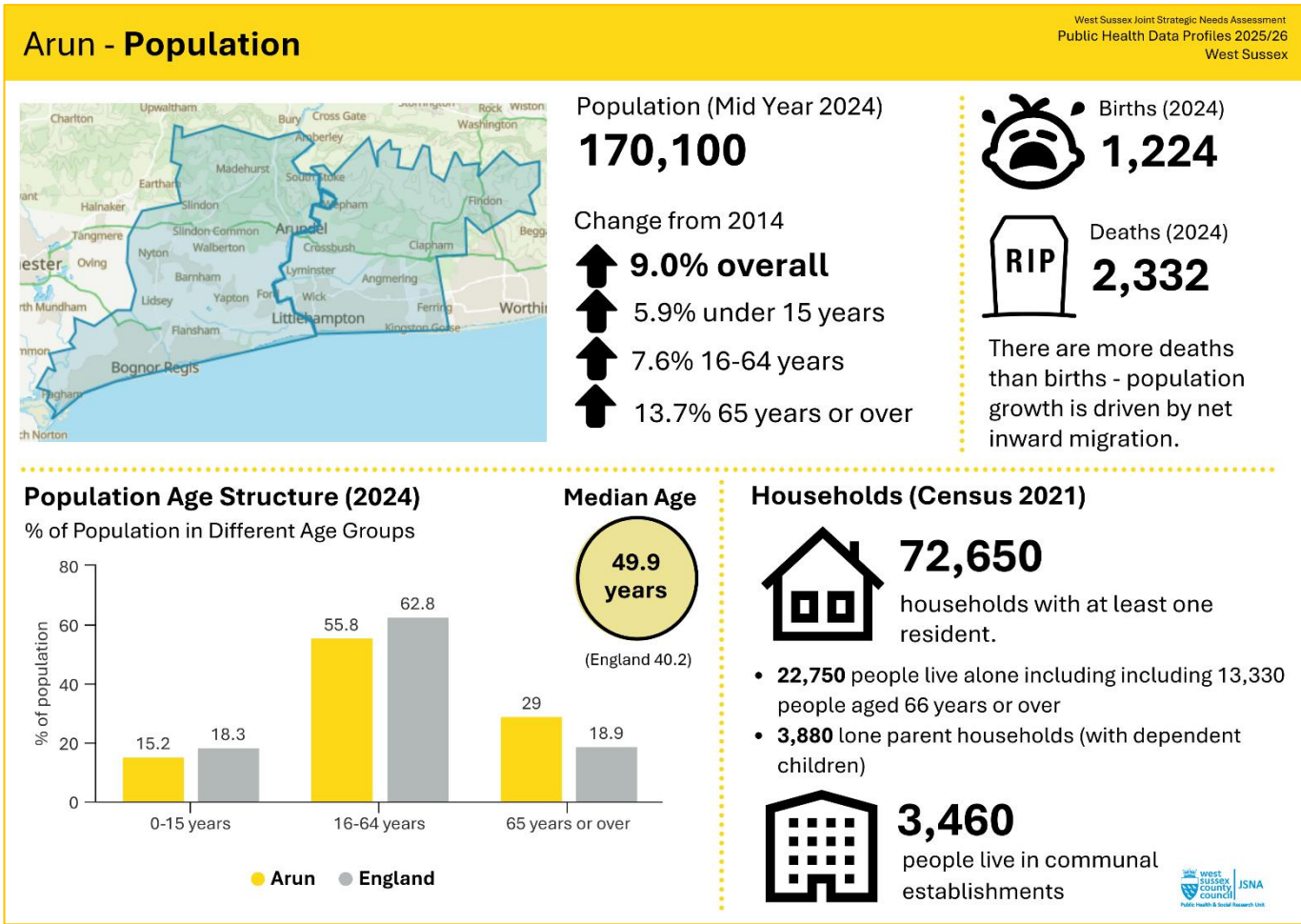
\*Where pharmacies/dispersing doctors are clustered together, the number in the cluster is shown in the circle.

© Crown copyright and database rights 2024 Ordnance Survey 100016969 | parallel | Mapbox | OpenStreetMap contributors

# ARUN

## Demographics

Arun is the largest locality in terms of population. It has the highest percentage of 65+ year olds in the county.





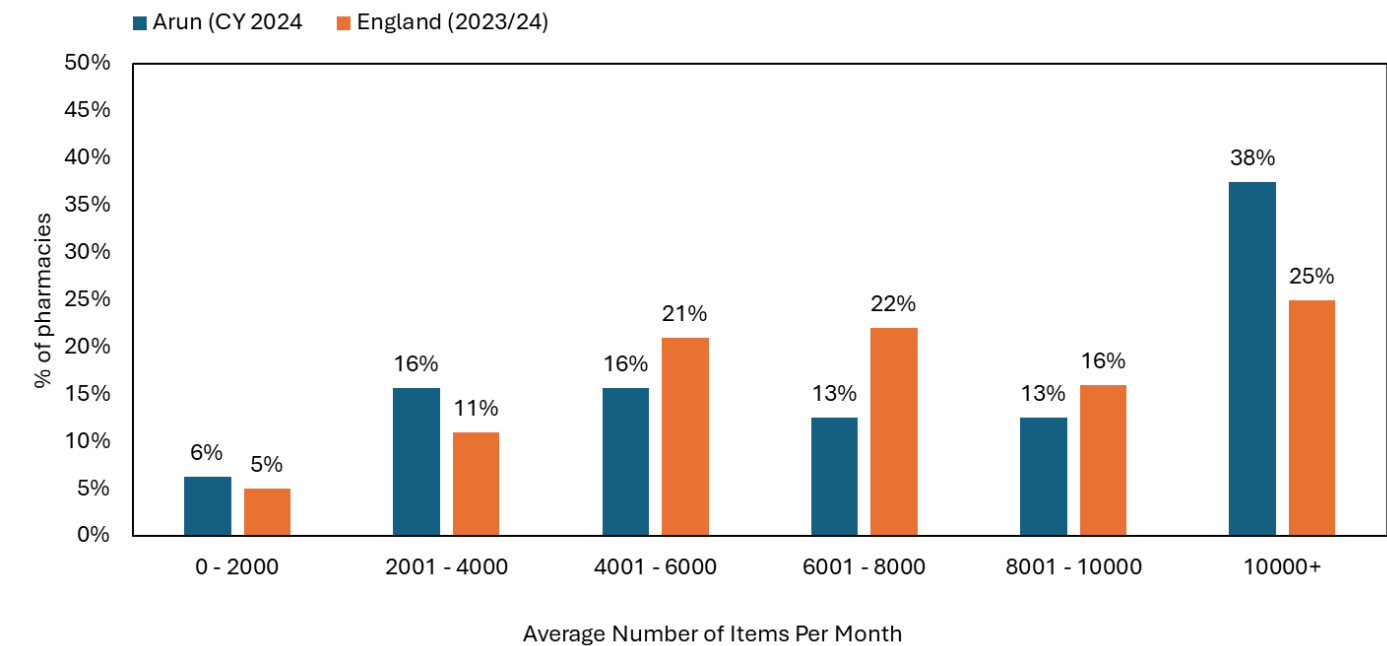
## Number of Contractors

Locality	Community Pharmacies (2022 number in brackets)	Dispensing GPs	Distance Selling	Appliance Contractor
Arun	31 (33)	0	0	1

Locality	Code	Contractor Name	Postcode	Type
Arun	FR739	FITTLEWORTH MEDICAL LIMITED	BN17 7GA	Appliance Contractor
Arun	FC331	SUPERDRUG PHARMACY	PO21 1PY	Community Pharmacy
Arun	FD172	GLYN NORRIS PHARMACY	BN17 7JQ	Community Pharmacy
Arun	FEH03	DAY LEWIS PHARMACY	PO21 2UW	Community Pharmacy
Arun	FER70	KAMSONS PHARMACY	BN16 4HL	Community Pharmacy
Arun	FF120	TESCO INSTORE PHARMACY	PO22 9ND	Community Pharmacy
Arun	FF722	ROWLANDS PHARMACY	PO22 6DH	Community Pharmacy
Arun	FG018	ARUNDEL PHARMACY	BN18 9AB	Community Pharmacy
Arun	FGW12	THE CROFT PHARMACY	PO20 3RP	Community Pharmacy
Arun	FHG77	JORDANS PHARMACY	PO21 4TW	Community Pharmacy
Arun	FHX45	KAMSONS PHARMACY	BN16 1JN	Community Pharmacy
Arun	FJ575	ASDA PHARMACY	BN12 6PN	Community Pharmacy
Arun	FJC32	TESCO INSTORE PHARMACY	BN17 5RA	Community Pharmacy
Arun	FJV00	KAMSONS PHARMACY	BN16 3DN	Community Pharmacy
Arun	FJV66	BOOTS	PO21 1PQ	Community Pharmacy
Arun	FKF86	KAMSONS PHARMACY	BN16 3AE	Community Pharmacy
Arun	FKR96	ALLIED PHARMACY	PO22 6DZ	Community Pharmacy
Arun	FML70	BOOTS	BN16 3DJ	Community Pharmacy
Arun	FMW18	ROWLANDS PHARMACY	BN12 5JP	Community Pharmacy
Arun	FP531	BOGNOR REGIS PHARMACY	PO21 1QN	Community Pharmacy
Arun	FPM94	JHOOTS PHARMACY	BN18 9HG	Community Pharmacy
Arun	FPW95	BOOTS THE CHEMIST	BN17 6RA	Community Pharmacy
Arun	FR862	KAMSONS PHARMACY*	BN17 5DX	Community Pharmacy
Arun	FRT09	KAMSONS PHARMACY	PO21 5AJ	Community Pharmacy
Arun	FTM17	YAPTON PHARMACY	BN18 0EY	Community Pharmacy
Arun	FV035	FIVE VILLAGES PHARMACY	PO22 0ER	Community Pharmacy
Arun	FVA18	KAMSONS PHARMACY	PO22 9TD	Community Pharmacy
Arun	FWA61	JHOOTS PHARMACY	PO21 3EU	Community Pharmacy
Arun	FWD07	CEEPHARM LTD	PO21 1PN	Community Pharmacy
Arun	FWF17	KAMSONS PHARMACY	BN17 5DX	Community Pharmacy
Arun	FXH45	WEST MEADS PHARMACY	PO21 5SB	Community Pharmacy
Arun	FXN56	BOOTS	PO22 7PP	Community Pharmacy

\*Closed in February 2025

Size of Contractors



Opening Hours

Locality	All Community Pharmacies	100- hour Community Pharmacies	Open early (before 9:00am)	Open in the evenings (after 6pm)*	Open at night (after 8pm)
Arun	31	3	7	11	3

\* Refers to pharmacies which are open at least one day per week after 6pm. Most pharmacies have the same opening times each weekday, but one in Arun and one in Horsham offer at least one night per week open after 6pm.

Volume of Activity on Pharmacy First – Compared with West Sussex Overall

Pharmacy First Clinical Pathways Consultations (2024) and Rate per 1,000 Population

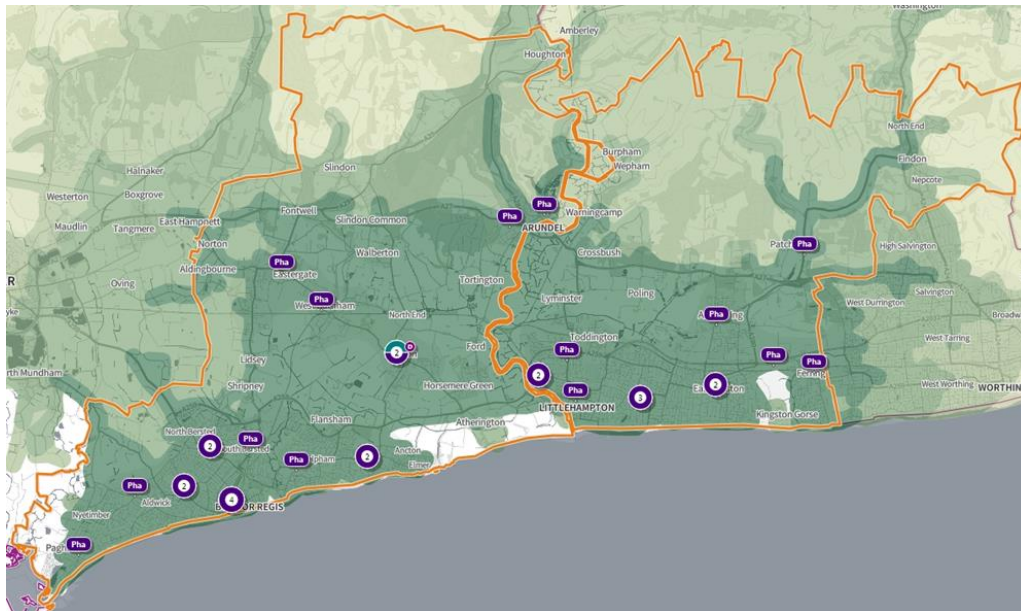
Locality	Sinusitis	Acute Sore Throat	Acute Otitis Media	Infected Insect Bites	Impetigo	Shingles	Uncomp UTI
Arun	551	1,587	886	735	247	238	1,254
West Sussex	3,144	7,465	3,833	3,470	1,319	973	7,049
Rate per 1,000 Population							
Arun	3.2	9.3	5.2	4.3	1.5	1.4	7.4
West Sussex	3.4	8.2	4.2	3.8	1.4	1.1	7.7



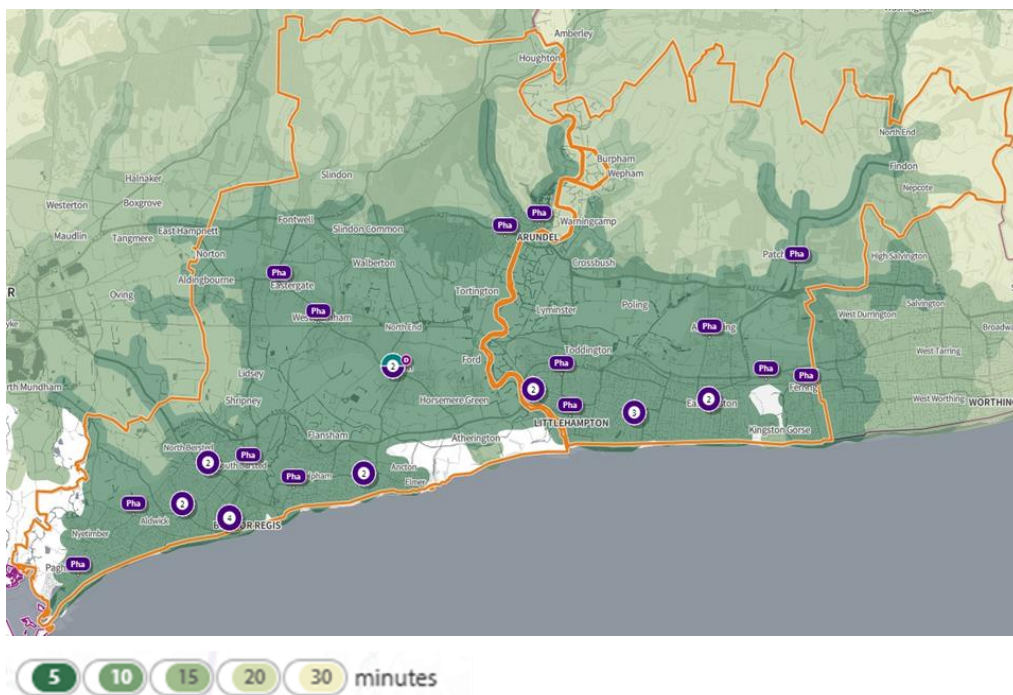
## Access Maps - Travel Time

There are two maps for each locality showing access in rush hour and outside of rush hour within the specific locality. The maps have been produced using the Department of Health and Social Care (DHSC) mapping tool (called Shape).

### Arun – Access During Rush Hour



### Arun – Access Outside of Rush Hour



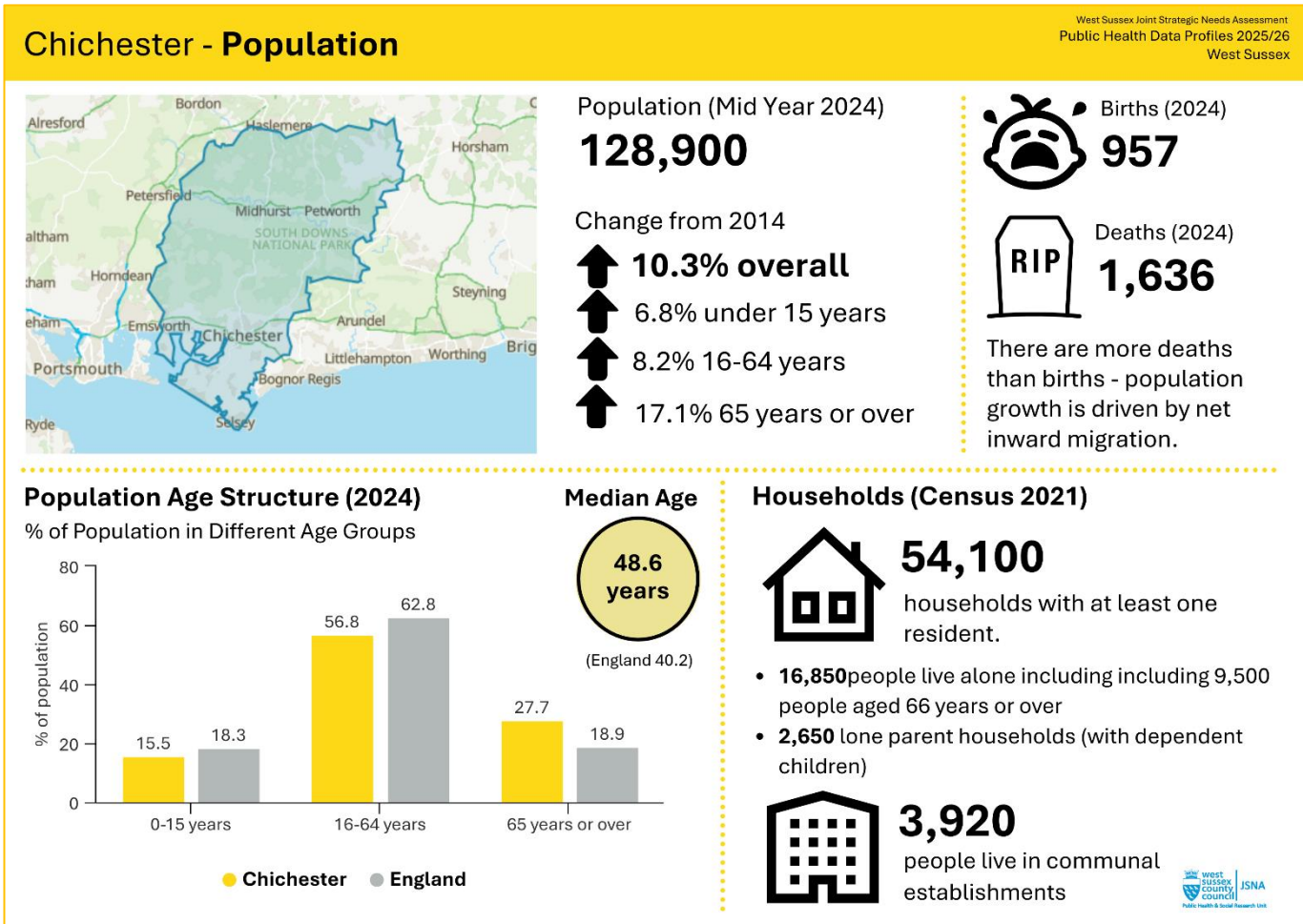
\*Where pharmacies/dispensing doctors are clustered together, the number in the cluster is shown in the circle.

© Crown copyright and database rights 2024 Ordnance Survey 100016969 | parallel | Mapbox | OpenStreetMap contributors

# CHICHESTER

## Demographics

Chichester has the second highest percentage of residents aged 65 or over.



## Number of Contractors

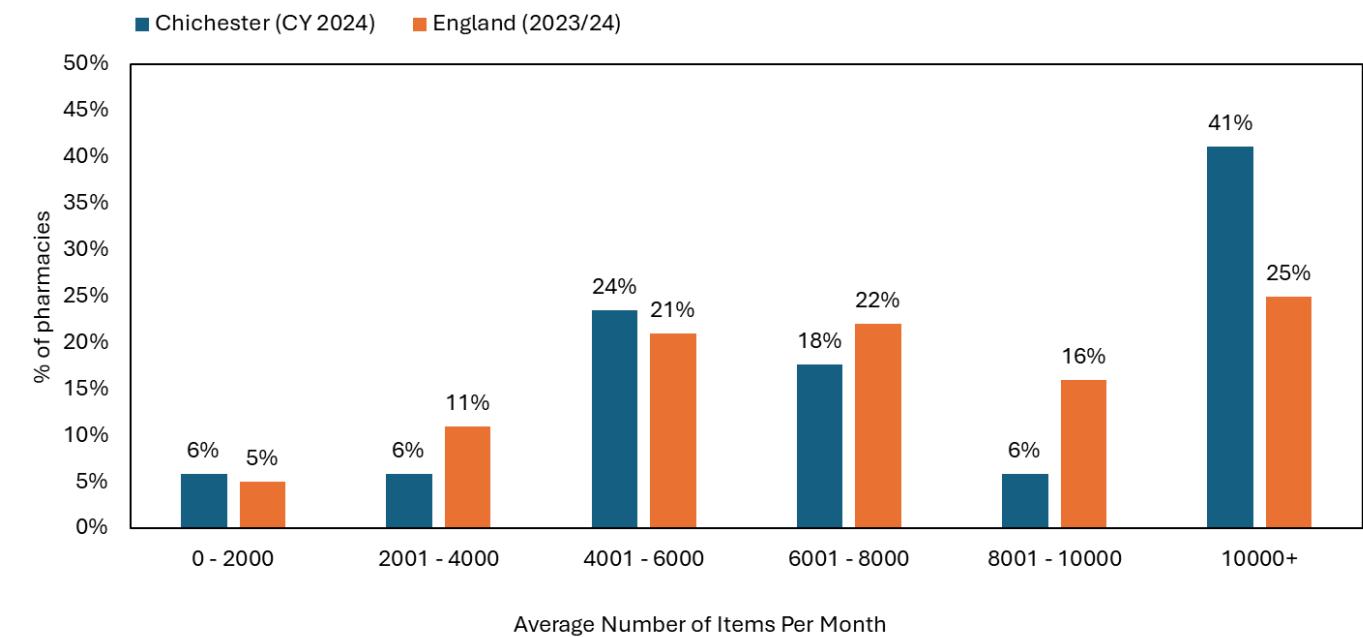
Locality	Community Pharmacies (2022 number in brackets)	Dispensing GPs	Distance Selling	Appliance Contractor
Chichester	17 (18)	6	1	0

Locality	Code	Contractor Name	Postcode	Type
Chichester	FA256	TESCO INSTORE PHARMACY	PO19 3JT	Community Pharmacy
Chichester	FA595	WITTERINGS PHARMACY	PO20 8BH	Community Pharmacy
Chichester	FFX59*	MH PHARMACY	GU29 9AW	Community Pharmacy
Chichester	FGC12	KAMSONS PHARMACY	PO19 1JL	Community Pharmacy
Chichester	FGV62	SOUTHBOURNE PHARMACY	PO10 8JG	Community Pharmacy
Chichester	FHX38	STEPHENS PHARMACY	PO19 3LA	Community Pharmacy
Chichester	FLA80	SUMMERSDALE PHARMACY	PO19 5RH	Community Pharmacy
Chichester	FLW75	PHARMACY LINK	PO20 8EA	Community Pharmacy
Chichester	FN320	SELSEY COMMUNITY PHARMACY	PO20 0QL	Community Pharmacy
Chichester	FND66	ROWLANDS PHARMACY	PO10 8UJ	Community Pharmacy
Chichester	FN92	FERNHURST PHARMACY	GU27 3JL	Community Pharmacy
Chichester	FP387	BOOTS	GU29 9DJ	Community Pharmacy
Chichester	FP617	PETWORTH PHARMACY	GU28 0AH	Community Pharmacy
Chichester	FQR24	BOOTS	PO20 0QB	Community Pharmacy
Chichester	FTG79	BOOTS	PO19 1LB	Community Pharmacy
Chichester	FW591	MIDHURST PHARMACY	GU29 9DH	Community Pharmacy
Chichester	FY694	BOOTS	PO20 8BJ	Community Pharmacy
Chichester	H82006	PETWORTH SURGERY	GU28 0LP	Dispensing GP
Chichester	H82013	LANGLEY HOUSE SURGERY	PO19 1RW	Dispensing GP
Chichester	H82031	LOXWOOD MEDICAL PRACTICE	RH14 0SU	Dispensing GP
Chichester	H82042	CATHEDRAL MEDICAL GROUP	PO19 1XT	Dispensing GP
Chichester	H82051	LAVANT ROAD SURGERY	PO19 5RH	Dispensing GP
Chichester	H82067	TANGMERE MEDICAL CENTRE	PO20 2HS	Dispensing GP
Chichester	FDM71	DOCTORS DIRECT PHARMACY LTD	PO20 1QH	Distance Selling

*\*Pharmacy had a change of ownership in February 2025, same location.*

*Note a new pharmacy opened in Chichester in June 2025 in Shopwyke Park.*

Size of Contractors



Opening Hours

Locality	All Community Pharmacies	100- hour Community Pharmacies	Open early (before 9:00am)	Open in the evenings (after 6pm)	Open at night (after 8pm)
Chichester	17	1	5	7	1

Volume of Activity on Pharmacy First – Compared with West Sussex Overall

Pharmacy First Clinical Pathways Consultations (2024) and Rate per 1,000 Population

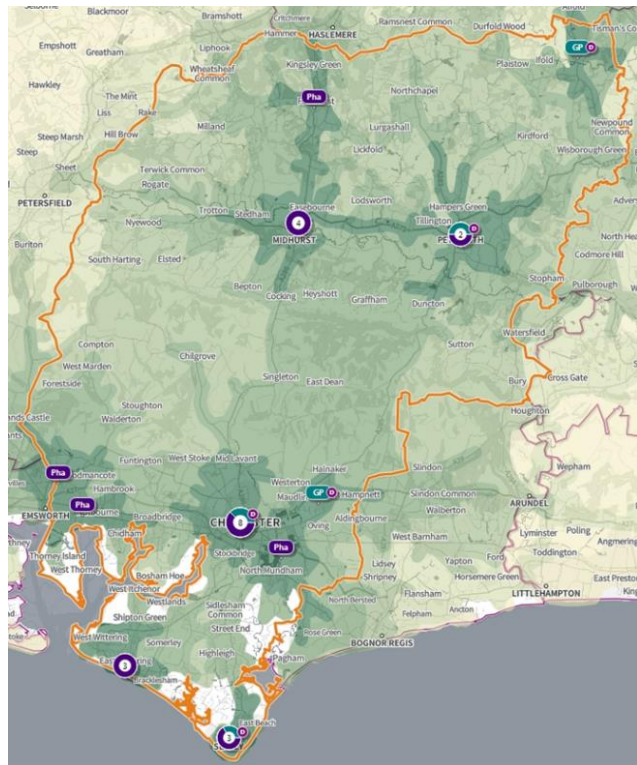
Locality	Sinusitis	Acute Sore Throat	Acute Otitis Media	Infected Insect Bites	Impetigo	Shingles	Uncomp UTI
Chichester	281	699	386	367	169	120	853
West Sussex	3,144	7,465	3,833	3,470	1,319	973	7,049
Rate per 1,000 Population							
Chichester	2.2	5.4	3.0	2.8	1.3	0.9	6.6
West Sussex	3.4	8.2	4.2	3.8	1.4	1.1	7.7



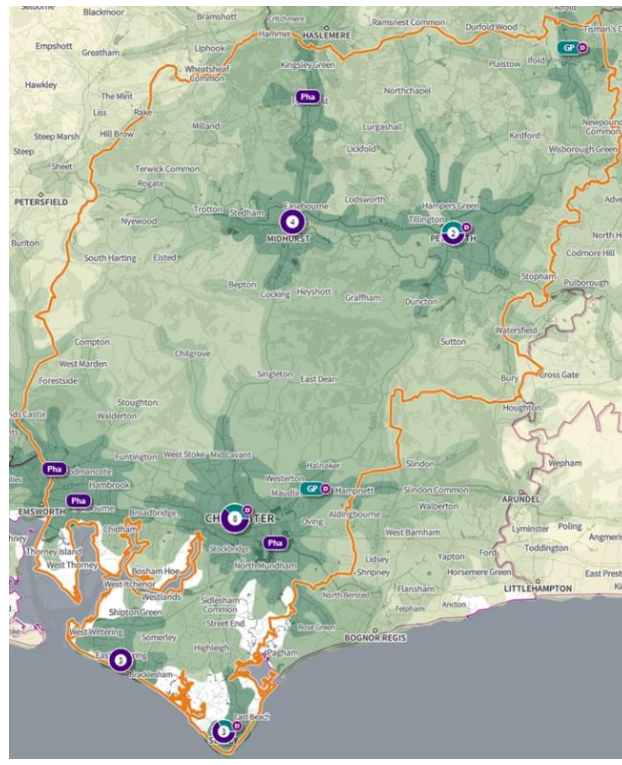
## Access Maps - Travel Time

There are two maps for each locality showing access in rush hour and outside of rush hour within the specific locality. The maps have been produced using the Department of Health and Social Care (DHSC) mapping tool (called Shape).

### Chichester – Access During Rush Hour



### Chichester – Access Outside of Rush Hour



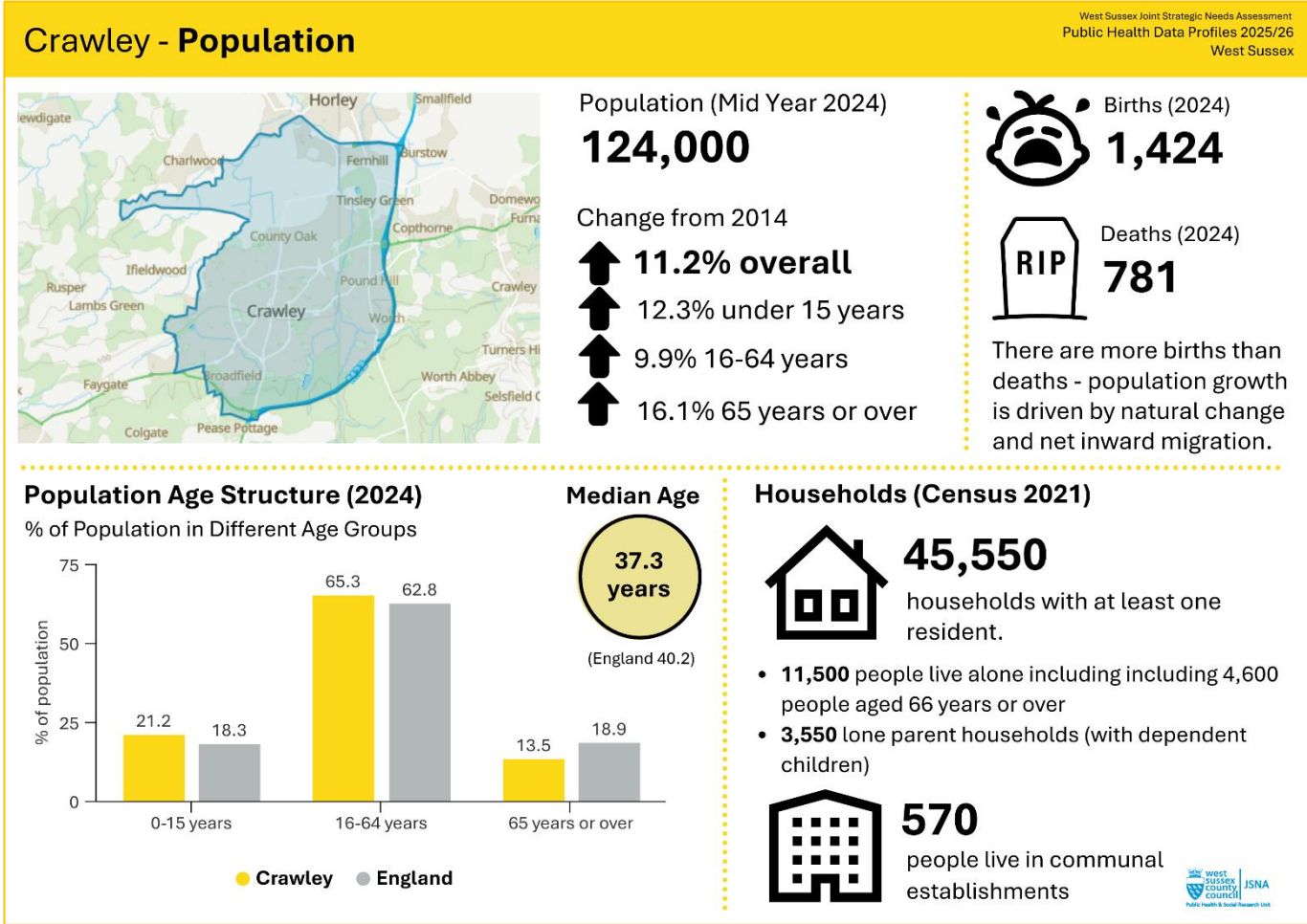
\*Where pharmacies/dispensing doctors are clustered together, the number in the cluster is shown in the circle.

© Crown copyright and database rights 2024 Ordnance Survey 100016969 | parallel | Mapbox | OpenStreetMap contributors

# CRAWLEY

## Demographics

Crawley has a relatively young population compared with the rest of the county and England. It is the only area of the county that, consistently, has more births than deaths.



## Population Characteristics

Measure	
% Disabled under the Equality Act definition (Age Adjusted) – activities limited a little	9.8%
% Disabled under the Equality Act definition (Age Adjusted) – activities limited a lot	7.0%
% Residents Non-White British	38.2%
% of children (under 16) living in low-income households	20.6%
% of 16-64 years olds on out of work benefits (March 2025)	4.5%
Life Expectancy – males (2021-2023)	79.7 years
Life Expectancy – females (2021-2023)	83.7 years

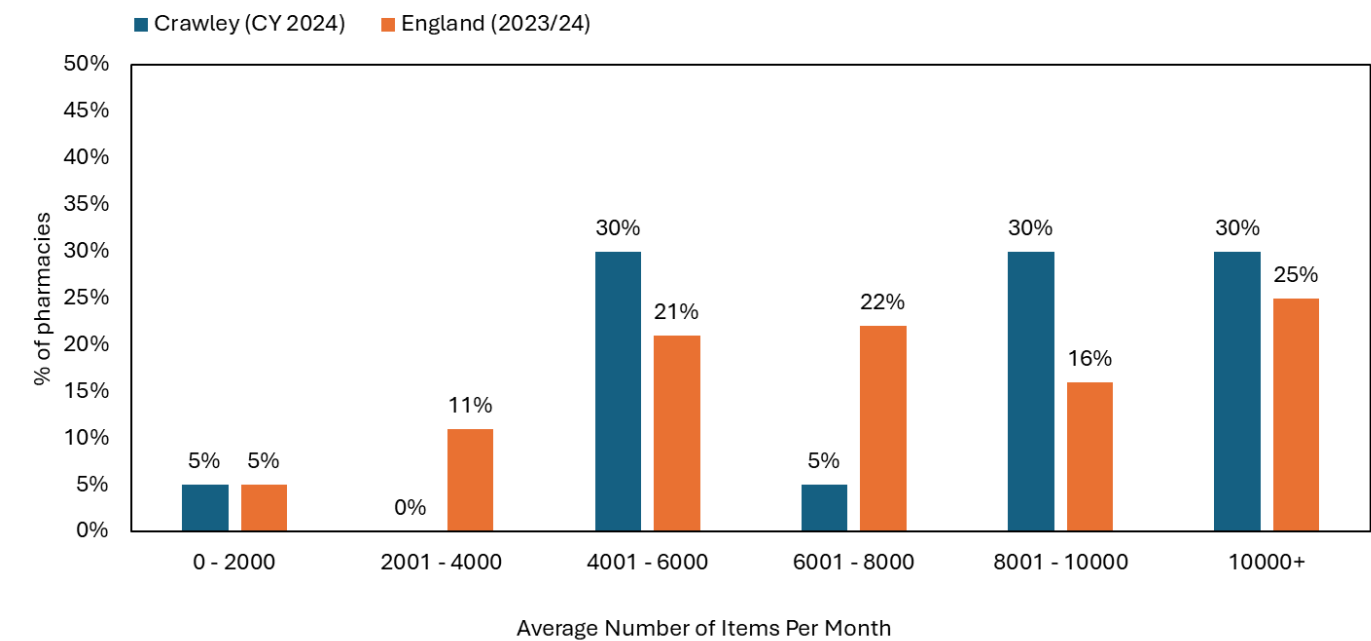
## Number of Contractors

Locality	Community Pharmacies (2022 number in brackets)	Dispensing GPs	Distance Selling	Appliance Contractor
Crawley	20 (21)	0	1	1

Locality	Code	Contractor Name	Postcode	Type
Crawley	FGR26	RAPIDCARE	RH10 9RA	Appliance Contractor
Crawley	FA094	KAMSONS PHARMACY	RH10 6AA	Community Pharmacy
Crawley	FAJ00	JADES CHEMIST	RH10 8DT	Community Pharmacy
Crawley	FCP03	JADES CHEMIST	RH11 0BF	Community Pharmacy
Crawley	FD052	DAY LEWIS PHARMACY	RH11 7HE	Community Pharmacy
Crawley	FDQ95	KAMSONS PHARMACY	RH10 7EA	Community Pharmacy
Crawley	FFF79	WELLHEALTH PHARMACY	RH11 7RS	Community Pharmacy
Crawley	FG380	CRAWLEY CHEMISTS	RH10 1HS	Community Pharmacy
Crawley	FHG42	BOOTS	RH10 7RA	Community Pharmacy
Crawley	FJ327	ASDA PHARMACY	RH11 7AH	Community Pharmacy
Crawley	FLG83	KAMSONS PHARMACY	RH10 6TE	Community Pharmacy
Crawley	FLV47	A KASSAM PHARMACY	RH10 1QA	Community Pharmacy
Crawley	FLW00	KAMSONS PHARMACY	RH10 5EQ	Community Pharmacy
Crawley	FMX53	BOOTS	RH6 0NN	Community Pharmacy
Crawley	FNW11	TESCO INSTORE PHARMACY	RH10 1GY	Community Pharmacy
Crawley	FPC47	KAMSONS PHARMACY	RH10 6NX	Community Pharmacy
Crawley	FPD91	GOSSOPS GREEN PHARMACY	RH11 8HH	Community Pharmacy
Crawley	FQ107	KAMSONS PHARMACY	RH11 9BA	Community Pharmacy
Crawley	FTA24	MANNING PHARMACY	RH11 8XW	Community Pharmacy
Crawley	FTM14	GEDDES CHEMIST	RH10 1LG	Community Pharmacy
Crawley	FXM67	BOOTS	RH10 1FX	Community Pharmacy
Crawley	FW576	SMART HEALTH PHARMACY	RH11 7AY	Distance Selling



Size of Contractors



Opening Hours

Locality	All Community Pharmacies	100- hour Community Pharmacies	Open early (before 9:00am)	Open in the evenings (after 6pm)	Open at night (after 8pm)
Crawley	20	2	1	6	2

Volume of Activity on Pharmacy First – Compared with West Sussex Overall

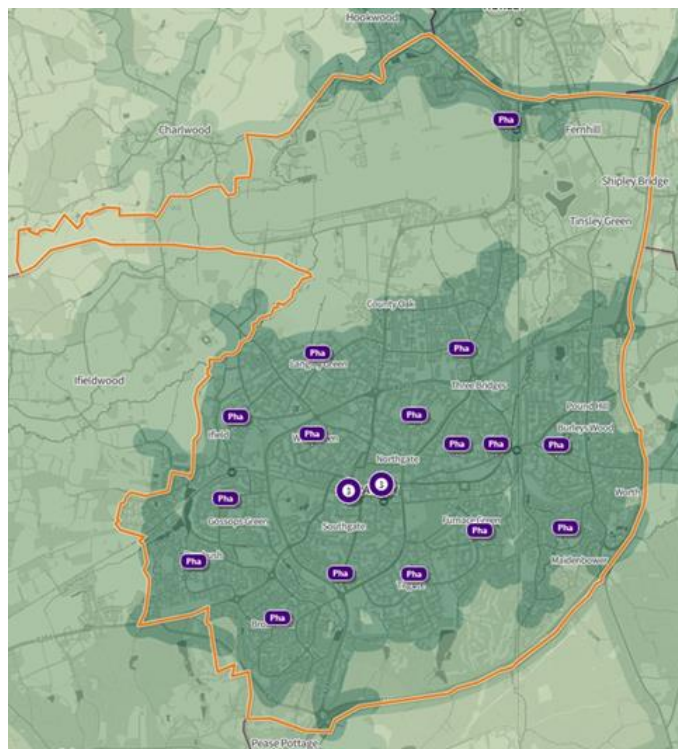
Pharmacy First Clinical Pathways Consultations (2024) and Rate per 1,000 Population

Locality	Sinusitis	Acute Sore Throat	Acute Otitis Media	Infected Insect Bites	Impetigo	Shingles	Uncomp UTI
Crawley	493	1,176	529	461	149	87	1,124
West Sussex	3,144	7,465	3,833	3,470	1,319	973	7,049
Rate per 1,000 Population							
Crawley	4.0	9.5	4.3	3.7	1.2	0.7	9.1
West Sussex	3.4	8.2	4.2	3.8	1.4	1.1	7.7

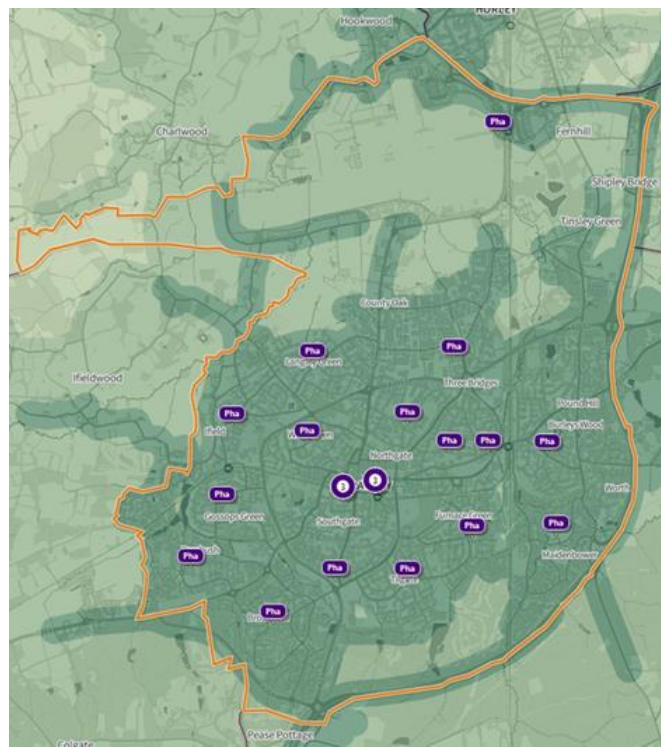
## Access Maps - Travel Time

There are two maps for each locality showing access in rush hour and outside of rush hour within the specific locality. The maps have been produced using the Department of Health and Social Care (DHSC) mapping tool (called Shape).

### Crawley – Access During Rush Hour



### Crawley – Access Outside of Rush Hour



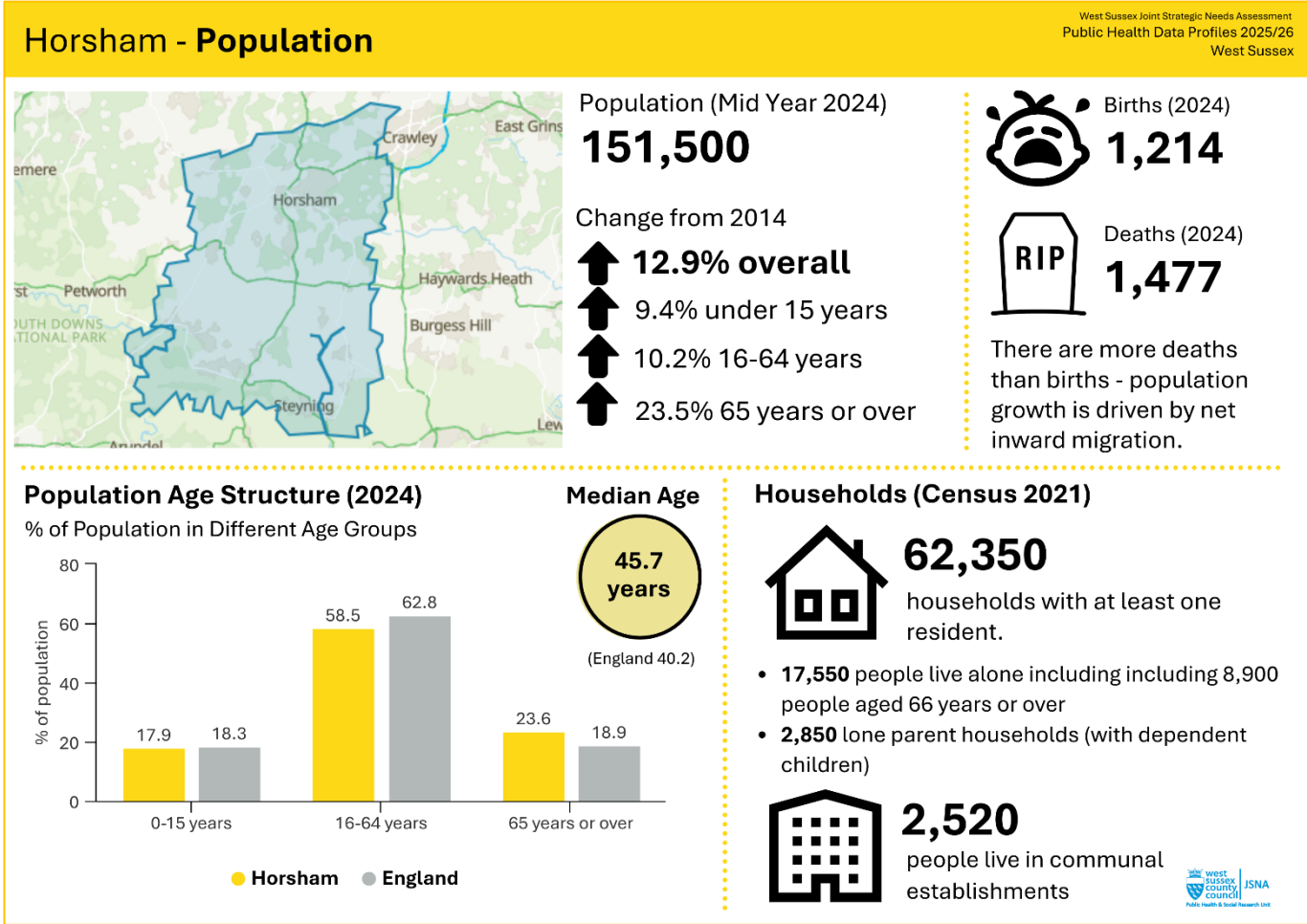
\*Where pharmacies/dispensing doctors are clustered together, the number in the cluster is shown in the circle.

© Crown copyright and database rights 2024 Ordnance Survey 100016969 | parallel | Mapbox | OpenStreetMap contributors

# HORSHAM

## Demographics

Horsham has experienced the highest population growth of all the PNA localities over the last 10 years.



## Population Characteristics

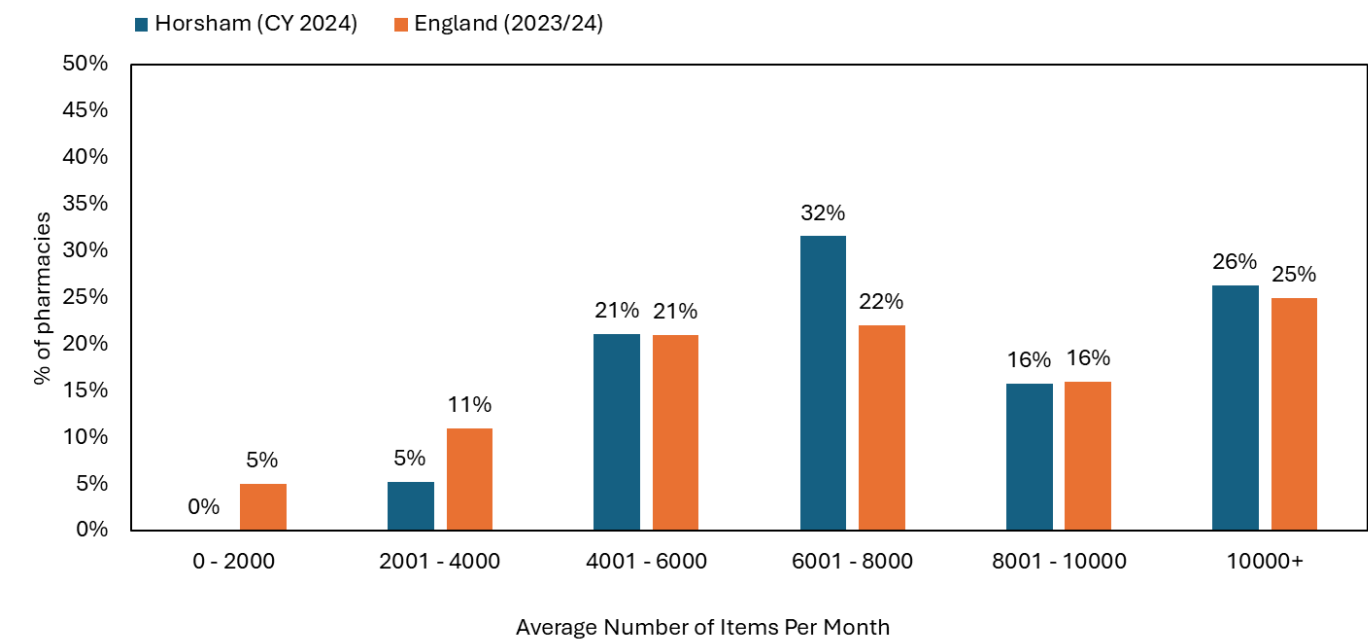
Measure	
% Disabled under the Equality Act definition (Age Adjusted) – activities limited a little	9.1%
% Disabled under the Equality Act definition (Age Adjusted) – activities limited a lot	5.0%
% Residents Non-White British	11.9%
% of children (under 16) living in low-income households	9.8%
% of 16-64 years olds on out of work benefits (March 2025)	2.1%
Life Expectancy – males (2021-2023)	82.0 years
Life Expectancy – females (2021-2023)	85.5 years

## Number of Contractors

Locality	Community Pharmacies (2022 number in brackets)	Dispensing GPs	Distance Selling	Appliance Contractor
Horsham	19 (20)	4	0	0

Locality	Code	Contractor Name	Postcode	Type
Horsham	FD849	SUPERDRUG PHARMACY	RH12 1HQ	Community Pharmacy
Horsham	FGL77	BOOTS	RH13 9LA	Community Pharmacy
Horsham	FH649	UPPER BEEDING PHARMACY	BN44 3HZ	Community Pharmacy
Horsham	FLE38	STORRINGTON PHARMACY	RH20 4FR	Community Pharmacy
Horsham	FMG86	HENFIELD PHARMACY	BN5 9DB	Community Pharmacy
Horsham	FMN24	BOOTS	RH20 4DR	Community Pharmacy
Horsham	FMW89	BILLINGSHURST PHARMACY	RH14 9NY	Community Pharmacy
Horsham	FNR36	DAY LEWIS PHARMACY	RH12 1BG	Community Pharmacy
Horsham	FPF43	ROFFEY CHEMIST	RH13 6AA	Community Pharmacy
Horsham	FQC35	TESCO INSTORE PHARMACY	RH12 3YU	Community Pharmacy
Horsham	FQF74	ASHINGTON PHARMACY	RH20 3DD	Community Pharmacy
Horsham	FT506	DAY LEWIS DENNE PHARMACY	RH12 5PJ	Community Pharmacy
Horsham	FTH80	KAMSONS PHARMACY	RH20 1FG	Community Pharmacy
Horsham	FTY98	PAYDENS PHARMACY	BN44 3RJ	Community Pharmacy
Horsham	FV556	RUDGWICK PHARMACY	RH12 3GF	Community Pharmacy
Horsham	FWT44	NORIES PHARMACY	RH13 5SD	Community Pharmacy
Horsham	FXG48	ARUN VALLEY PHARMACY	RH14 9SE	Community Pharmacy
Horsham	FXK74	BOOTS	RH12 5JL	Community Pharmacy
Horsham	FY060	BOOTS	RH12 1HQ	Community Pharmacy
Horsham	H82004	COWFOLD MEDICAL GROUP	RH13 8DN	Dispensing GP
Horsham	H82027	RUDGWICK MEDICAL CENTRE	RH12 3HB	Dispensing GP
Horsham	H82055	BILLINGSHURST SURGERY	RH14 9QZ	Dispensing GP
Horsham	H82060	HENFIELD MEDICAL CENTRE	BN5 9JQ	Dispensing GP

Size of Contractors



Opening Hours

Locality	All Community Pharmacies	100- hour Community Pharmacies	Open early (before 9:00am)	Open in the evenings (after 6pm)*	Open at night (after 8pm)
Horsham	19	0	6	7	0

\* Refers to pharmacies which are open at least one day per week after 6pm. Most pharmacies have the same opening times each weekday, but one in Arun and one in Horsham offer at least one night per week open after 6pm.

Volume of Activity on Pharmacy First – Compared with West Sussex Overall

Pharmacy First Clinical Pathways Consultations (2024) and Rate per 1,000 Population

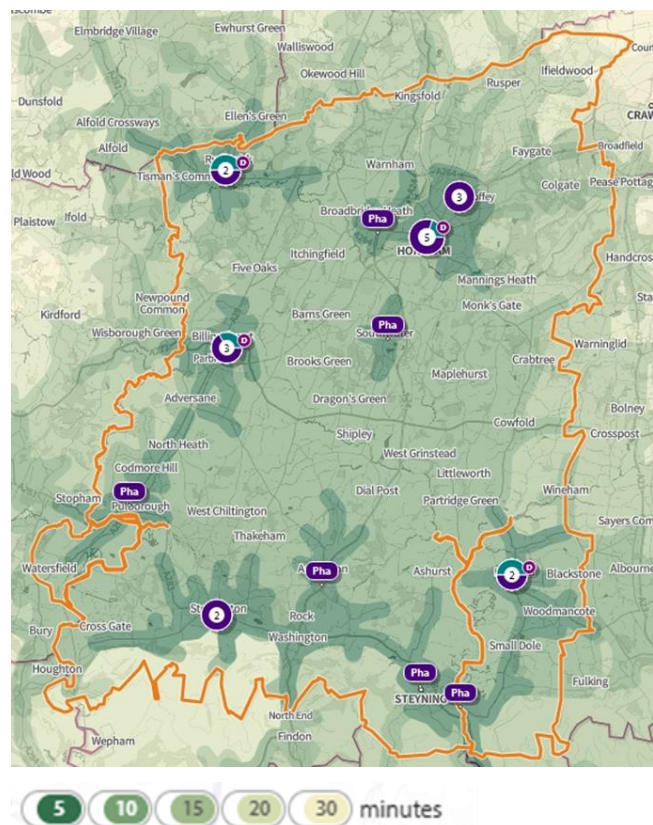
Locality	Sinusitis	Acute Sore Throat	Acute Otitis Media	Infected Insect Bites	Impetigo	Shingles	Uncomp UTI
Horsham	503	1,015	618	557	226	162	1,141
West Sussex	3,144	7,465	3,833	3,470	1,319	973	7,049
Rate per 1,000 Population							
Horsham	3.3	6.7	4.1	3.7	1.5	1.1	7.5
West Sussex	3.4	8.2	4.2	3.8	1.4	1.1	7.7



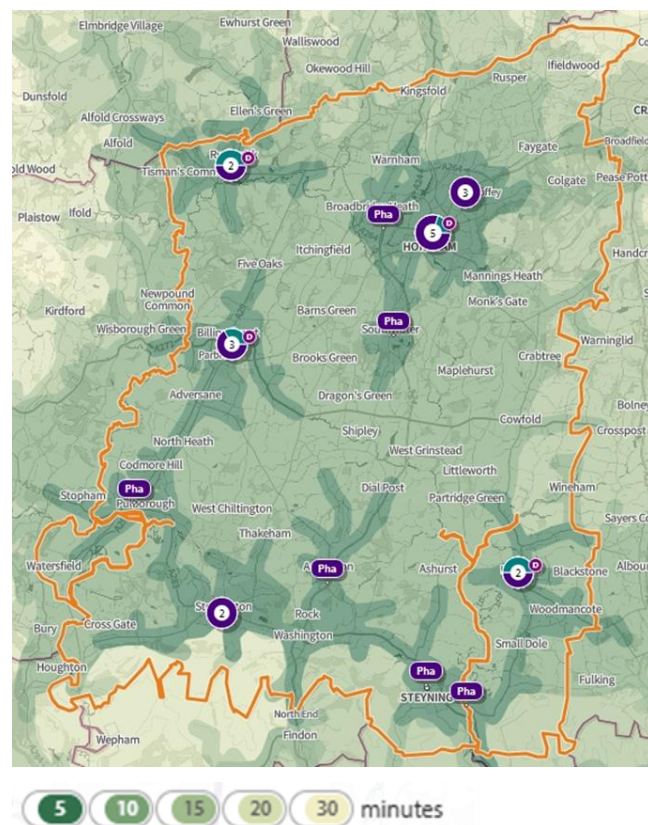
## Access Maps - Travel Time

There are two maps for each locality showing access in rush hour and outside of rush hour within the specific locality. The maps have been produced using the Department of Health and Social Care (DHSC) mapping tool (called Shape).

### Horsham – Access During Rush Hour



### Horsham – Access Outside of Rush Hour



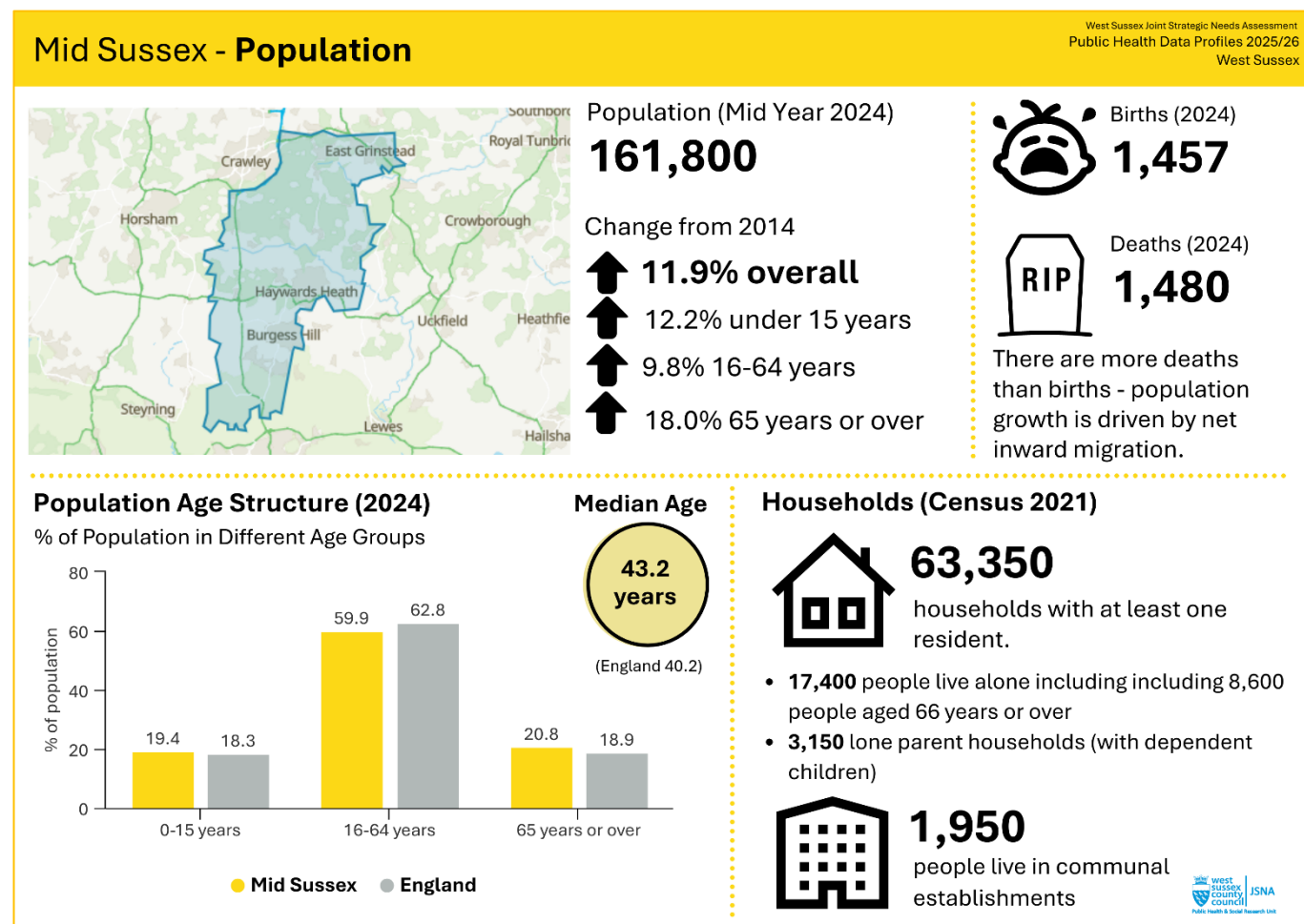
\*Where pharmacies/dispensing doctors are clustered together, the number in the circle is shown in the circle.

© Crown copyright and database rights 2024 Ordnance Survey 100016969 | parallel | Mapbox | OpenStreetMap contributors

## MID SUSSEX

### Demographics

Mid Sussex has experienced the second highest growth in population (after Horsham) over the last 10 years.



### Population Characteristics

Measure	
% Disabled under the Equality Act definition (Age Adjusted) – activities limited a little	9.2%
% Disabled under the Equality Act definition (Age Adjusted) – activities limited a lot	5.0%
% Residents Non-White British	14.2%
% of children (under 16) living in low-income households	8.2%
% of 16-64 years olds on out of work benefits (March 2025)	1.9%
Life Expectancy – males (2021-2023)	81.1 years
Life Expectancy – females (2021-2023)	85.3 years



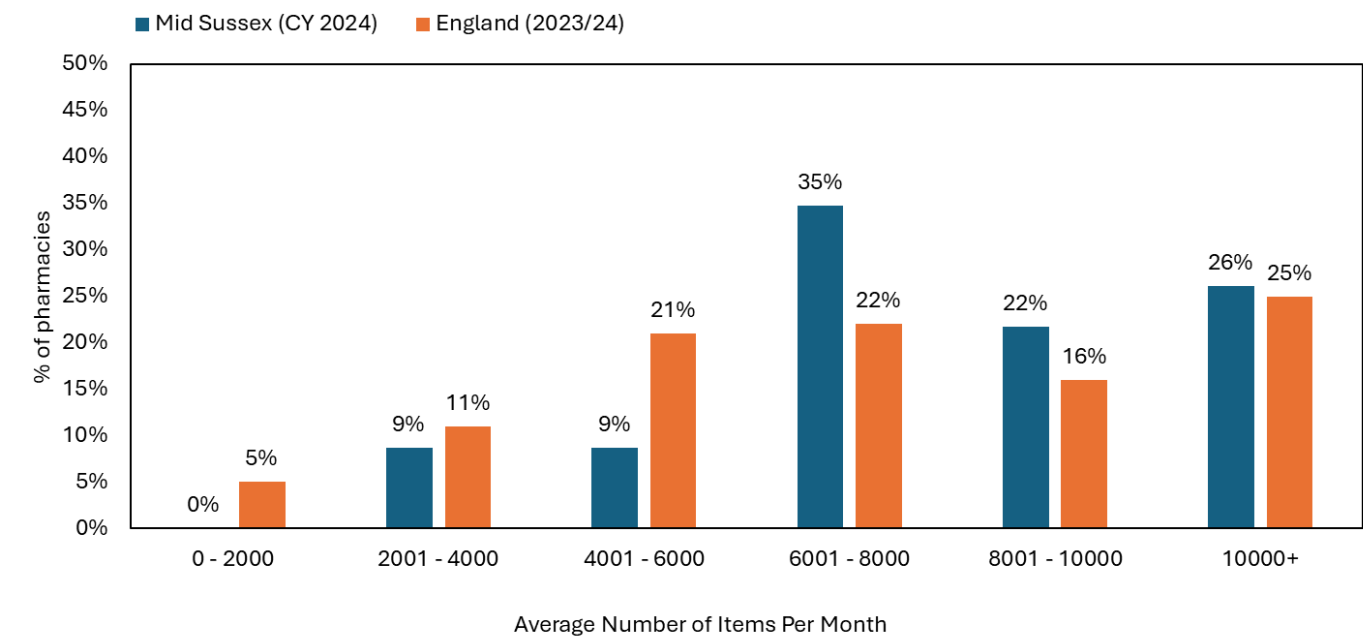
## Number of Contractors

Locality	Community Pharmacies (2022 number in brackets)	Dispensing GPs	Distance Selling	Appliance Contractor
Mid Sussex	23 (27)	2	0	0

Locality	Code	Contractor Name	Postcode	Type
Mid Sussex	FAW68	KAMSONS PHARMACY	RH16 3BB	Community Pharmacy
Mid Sussex	FDF64	TESCO INSTORE PHARMACY	RH15 9QT	Community Pharmacy
Mid Sussex	FF787	JESSICA'S CHEMIST	RH15 8UA	Community Pharmacy
Mid Sussex	FGG50	CRAWLEY DOWN PHARMACY	RH10 4TX	Community Pharmacy
Mid Sussex	FGP96	SELBYS PHARMACY	RH16 2HJ	Community Pharmacy
Mid Sussex	FHQ40	KAMSONS PHARMACY	RH16 3TY	Community Pharmacy
Mid Sussex	FJ142	KAMSONS PHARMACY	RH16 4SY	Community Pharmacy
Mid Sussex	FJG62	<i>DOLPHINS PHARMACY*</i>	RH16 4BN	Community Pharmacy
Mid Sussex	FJP20	DAY LEWIS PHARMACY	BN6 8QA	Community Pharmacy
Mid Sussex	FKR08	HOPKINS PHARMACY	RH15 9DE	Community Pharmacy
Mid Sussex	FM515	ORCHARDS PHARMACY	RH16 3TH	Community Pharmacy
Mid Sussex	FNE56	JUDGES CLOSE PHARMACY	RH19 3AE	Community Pharmacy
Mid Sussex	FQL56	BOOTS	RH16 4LQ	Community Pharmacy
Mid Sussex	FRF69	COPTHORNE PHARMACY	RH10 3RE	Community Pharmacy
Mid Sussex	FRR58	BOOTS	RH19 1AB	Community Pharmacy
Mid Sussex	FT654	BOOTS	BN6 8AG	Community Pharmacy
Mid Sussex	FTT23	DAY LEWIS PHARMACY	RH15 9XN	Community Pharmacy
Mid Sussex	FTV55	BOOTS	RH15 9NP	Community Pharmacy
Mid Sussex	FTX28	HURST PHARMACY	BN6 9PX	Community Pharmacy
Mid Sussex	FWF61	ABBOTTS PHARMACY	RH16 2HN	Community Pharmacy
Mid Sussex	FWM46	DAY LEWIS PHARMACY	RH19 1QL	Community Pharmacy
Mid Sussex	FXA71	MOATFIELD PHARMACY	RH19 3GW	Community Pharmacy
Mid Sussex	FYX44	S.C.WILLIAMS PHARMACY	RH15 9AA	Community Pharmacy
Mid Sussex	H82040	CRAWLEY DOWN MEDICAL CENTRE	RH10 4HY	Dispensing GP
Mid Sussex	H82615	OUSE VALLEY PRACTICE	RH17 6HB	Dispensing GP

*\*Cuckfield Chemist (FJG62, previously Dolphins) relocated from Haywards Heath back to Cuckfield after a 12-month temporary move. Pharmaceutical services resumed in Cuckfield in May 2025 following a short delay.*

Size of Contractors



Opening Hours

Locality	All Community Pharmacies	100- hour Community Pharmacies	Open early (before 9:00am)	Open in the evenings (after 6pm)	Open at night (after 8pm)
Mid Sussex	23	1	5	8	1

Volume of Activity on Pharmacy First – Compared with West Sussex Overall

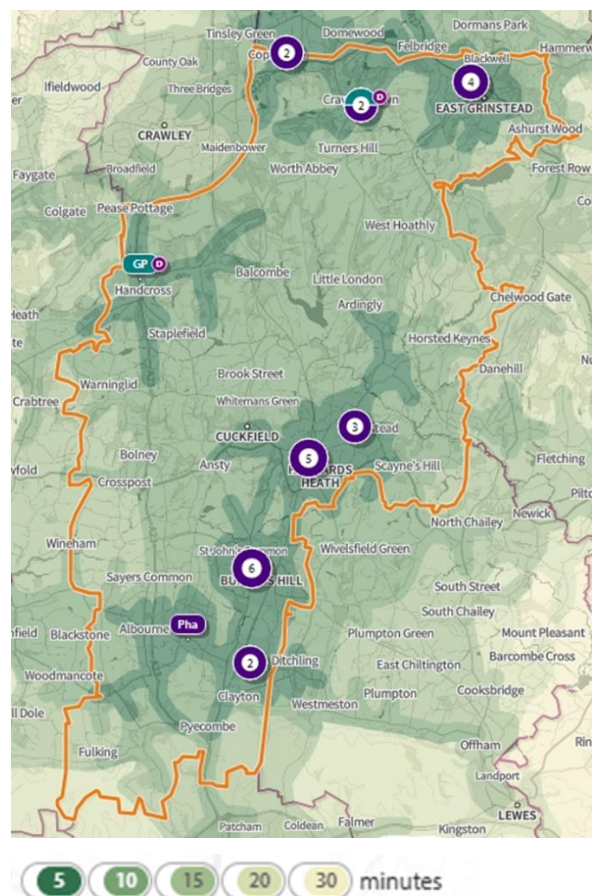
Pharmacy First Clinical Pathways Consultations (2024) and Rate per 1,000 Population

Locality	Sinusitis	Acute Sore Throat	Acute Otitis Media	Infected Insect Bites	Impetigo	Shingles	Uncomp UTI
Mid Sussex	469	923	421	467	217	129	926
West Sussex	3,144	7,465	3,833	3,470	1,319	973	7,049
Rate per 1,000 Population							
Mid Sussex	2.9	5.7	2.6	2.9	1.3	0.8	5.7
West Sussex	3.4	8.2	4.2	3.8	1.4	1.1	7.7

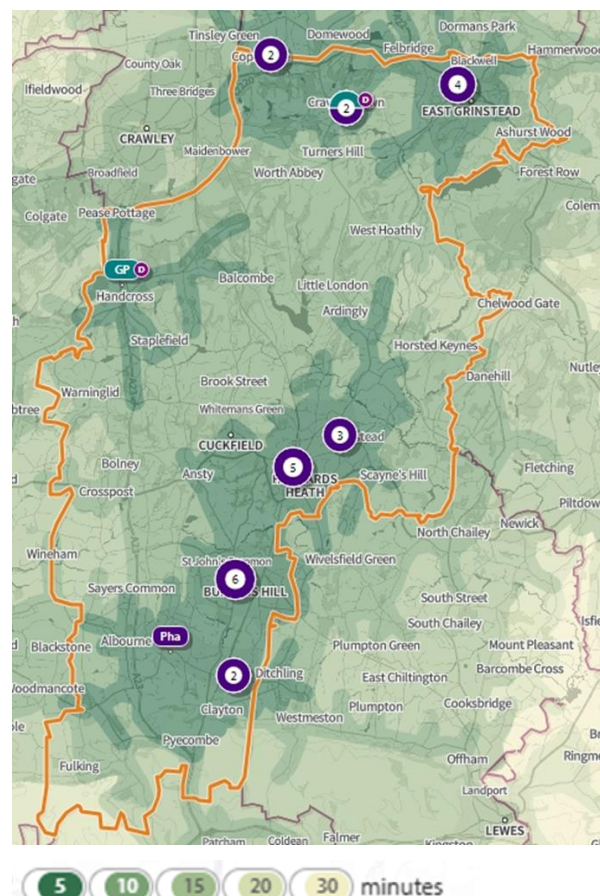
## Access Maps - Travel Time

There are two maps for each locality showing access in rush hour and outside of rush hour within the specific locality. The maps have been produced using the Department of Health and Social Care (DHSC) mapping tool (called Shape).

### Mid Sussex – Access During Rush Hour



### Mid Sussex – Access Outside of Rush Hour



**Note:** Cuckfield Chemist (FJG62 – previously Dolphins) relocated back from Haywards Heath where they were temporarily located for a period of 12 months which ended on the 08 May 2025. There was slight delay in opening in Cuckfield and pharmaceutical services provision started on the 19 May 2025. Data in this PNA are as January 2025, the move from Haywards Heath to Cuckfield does not impact the access assessment undertaken

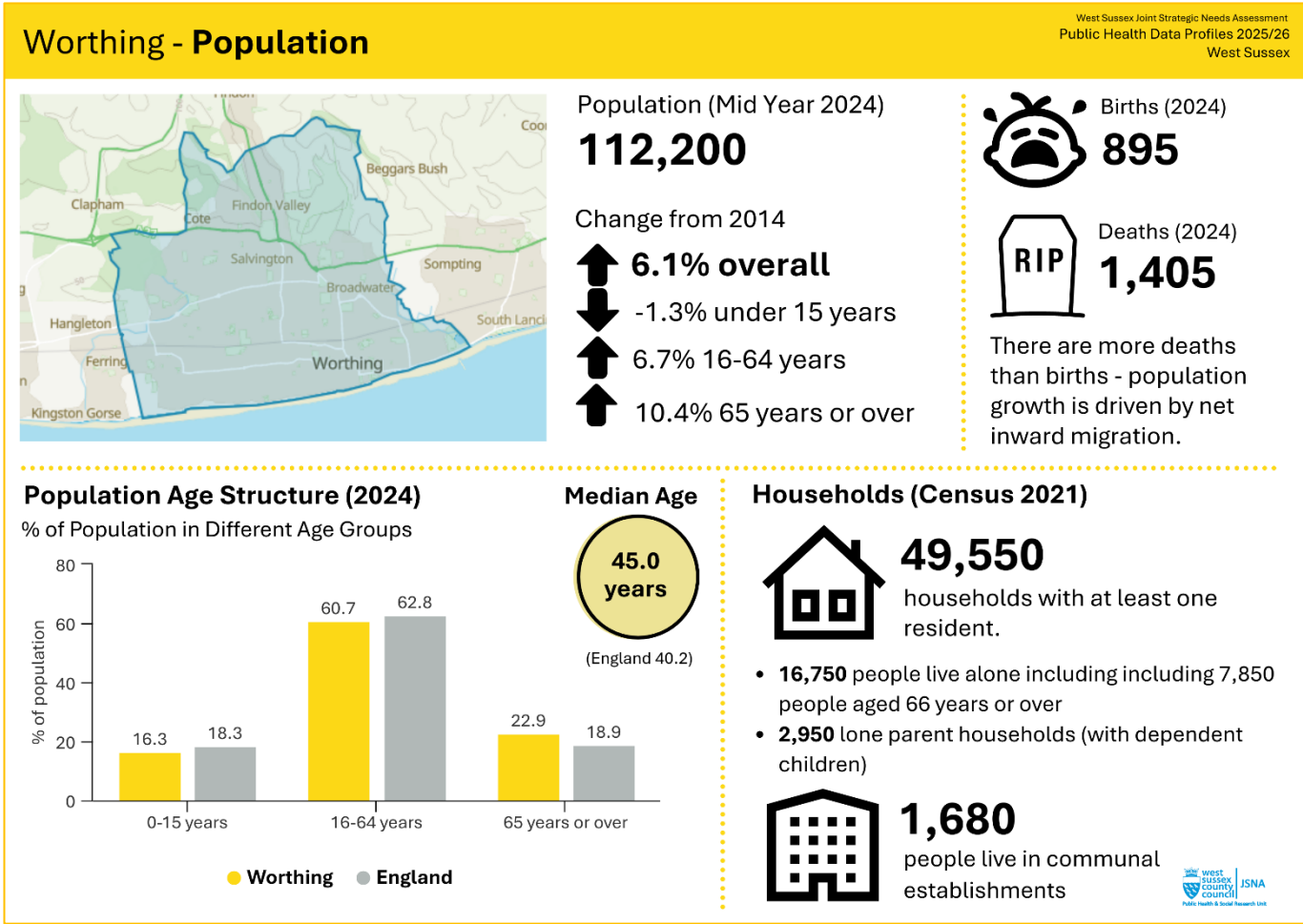
\*Where pharmacies/dispensing doctors are clustered together, the number in the cluster is shown in the circle.

© Crown copyright and database rights 2024 Ordnance Survey 100016969 | parallel | Mapbox | OpenStreetMap contributors

# WORTHING

## Demographics

Worthing is the only area which has seen a fall in the under 15 population in the last 10 years.



## Population Characteristics

Measure	
% Disabled under the Equality Act definition (Age Adjusted) – activities limited a little	11.0%
% Disabled under the Equality Act definition (Age Adjusted) – activities limited a lot	7.2%
% Residents Non-White British	15.0%
% of children (under 16) living in low-income households	14.9%
% of 16-64 years olds on out of work benefits (March 2025)	3.1%
Life Expectancy – males (2021-2023)	79.3 years
Life Expectancy – females (2021-2023)	83.1 years

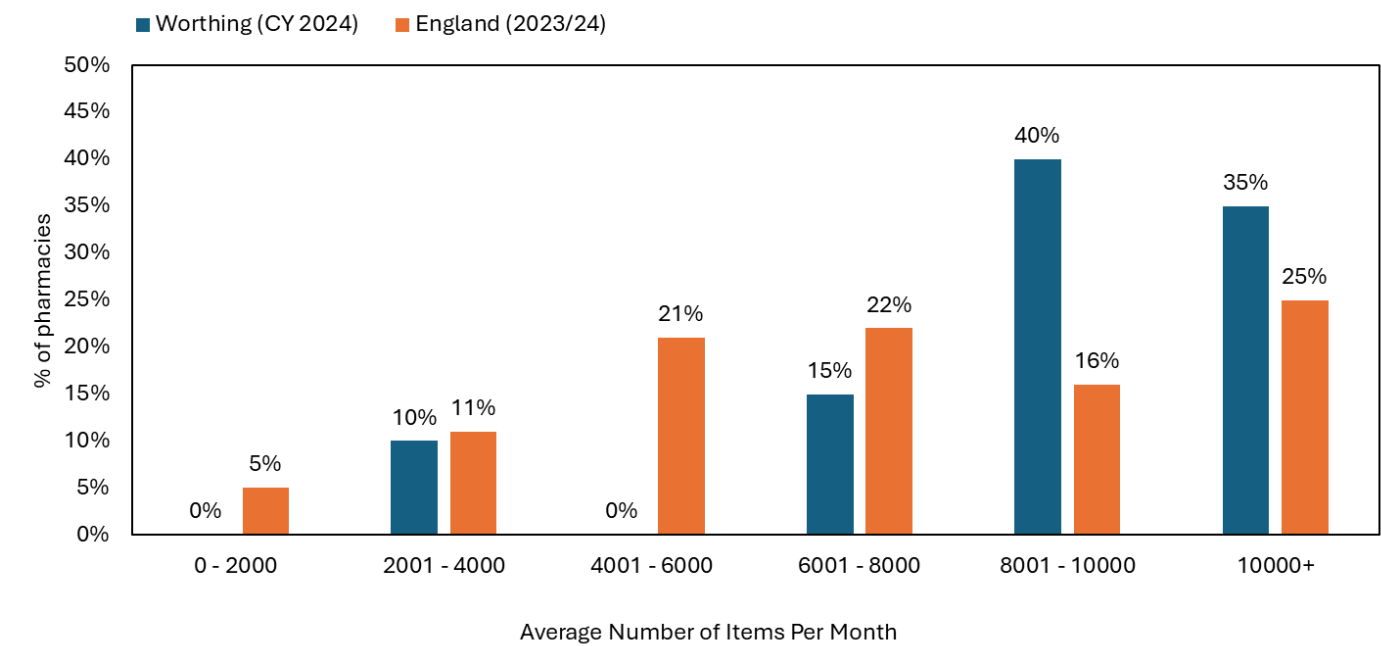
## Number of Contractors

Locality	Community Pharmacies (2022 number in brackets)	Dispensing GPs	Distance Selling	Appliance Contractor
Worthing	20 (21)	0	0	2

Locality	Code	Contractor Name	Postcode	Type
Worthing	FJ469	FITTLEWORTH MEDICAL LIMITED	BN13 3QZ	Appliance Contractor
Worthing	FVQ58	SCRIPT EASY	BN14 8ND	Appliance Contractor
Worthing	FAL02	KAMSONS PHARMACY	BN13 2JP	Community Pharmacy
Worthing	FC269	TARRING COMMUNITY PHARMACY	BN14 7JL	Community Pharmacy
Worthing	FCR78	ROWLANDS PHARMACY	BN12 4FD	Community Pharmacy
Worthing	FCY75	BOOTS	BN12 4AP	Community Pharmacy
Worthing	FEV02	BOOTS	BN14 9LA	Community Pharmacy
Worthing	FEV35	TESCO INSTORE PHARMACY	BN13 3PB	Community Pharmacy
Worthing	FF519	SUPERDRUG PHARMACY	BN11 3HB	Community Pharmacy
Worthing	FLC19	BOOTS THE CHEMIST	BN11 3HE	Community Pharmacy
Worthing	FLD69	WORTHING PHARMACY	BN11 2EN	Community Pharmacy
Worthing	FLH80	TEVILLE GATE PHARMACY	BN11 1UY	Community Pharmacy
Worthing	FMW35	KAMSONS PHARMACY	BN14 9DA	Community Pharmacy
Worthing	FNN61	KAMSONS PHARMACY	BN13 3FG	Community Pharmacy
Worthing	FQM12	KAMSONS PHARMACY	BN12 4PE	Community Pharmacy
Worthing	FRK42	ALLIED PHARMACY WORTHING	BN12 6DJ	Community Pharmacy
Worthing	FV863	UNICARE PHARMACY	BN11 3LA	Community Pharmacy
Worthing	FV884	BROADWATER PHARMACY	BN14 8JE	Community Pharmacy
Worthing	FVQ52	MCCORMICK PHARMACY	BN14 7PA	Community Pharmacy
Worthing	FVT24	PAYDENS PHARMACY	BN11 1JA	Community Pharmacy
Worthing	FX751	EAST WORTHING PHARMACY	BN11 2QY	Community Pharmacy
Worthing	FXR40	LIME TREE PHARMACY	BN14 0DL	Community Pharmacy



Size of Contractors



Opening Hours

Locality	All Community Pharmacies	100- hour Community Pharmacies	Open early (before 9:00am)	Open in the evenings (after 6pm)	Open at night (after 8pm)
Worthing	20	1	5	5	1

Volume of Activity on Pharmacy First – Compared with West Sussex Overall

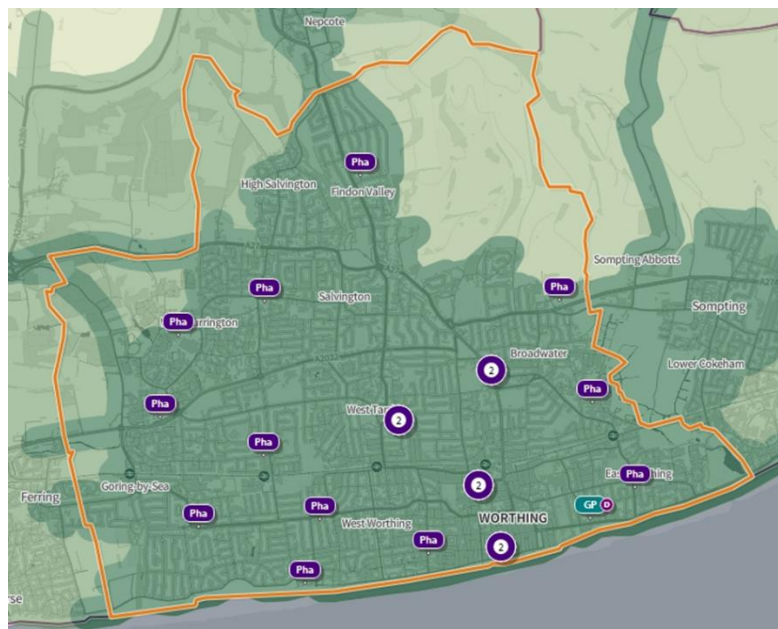
Pharmacy First Clinical Pathways Consultations (2024) and Rate per 1,000 Population

Locality	Sinusitis	Acute Sore Throat	Acute Otitis Media	Infected Insect Bites	Impetigo	Shingles	Uncomp UTI
Worthing	541	1,463	688	561	191	152	1,142
West Sussex	3,144	7,465	3,833	3,470	1,319	973	7,049
Rate per 1,000 Population							
Worthing	4.7	12.8	6.0	4.9	1.7	1.3	10.0
West Sussex	3.4	8.2	4.2	3.8	1.4	1.1	7.7

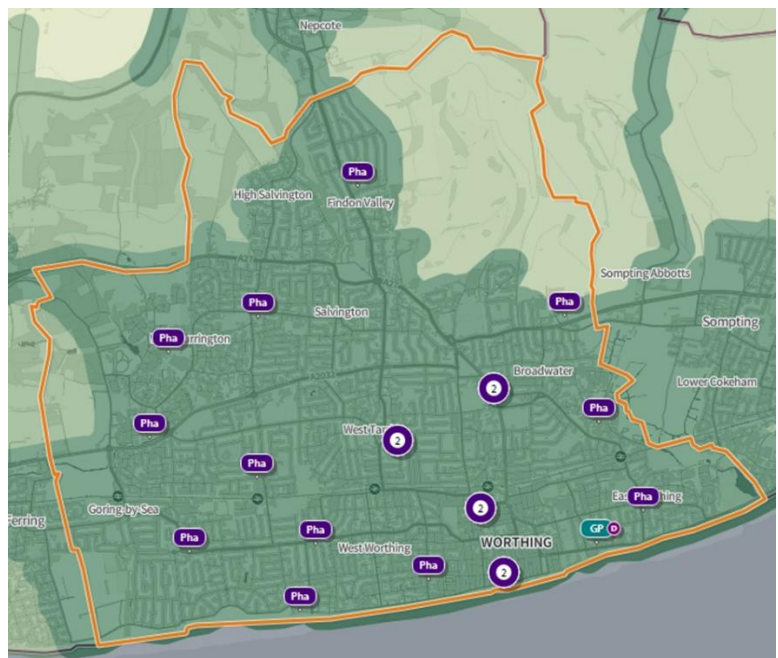
## Access Maps - Travel Time

There are two maps for each locality showing access in rush hour and outside of rush hour within the specific locality. The maps have been produced using the Department of Health and Social Care (DHSC) mapping tool (called Shape).

### Worthing – Access During Rush Hour



### Worthing – Access Outside of Rush Hour



\*Where pharmacies/dispensing doctors are clustered together, the number in the cluster is shown in the circle.

© Crown copyright and database rights 2024 Ordnance Survey 100016969 | parallel | Mapbox | OpenStreetMap contributors